

Anti-KALRN antibody (810-890 Internal) (STJ92786)

STJ92786

GENERAL INFORMATION

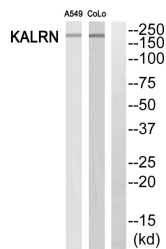
Product Type	Primary antibodies
Short Description	Rabbit polyclonal antibody anti-Kalirin (810-890 Internal) is suitable for use in Western Blot and ELISA research applications.
Applications	WB, ELISA
Host/Source	Rabbit
Reactivity	Human, Mouse, Rat

PRODUCT PROPERTIES

Clonality	Polyclonal
Clone ID	
Concentration	1 mg/mL
Conjugation	Unconjugated
Purification	The antibody was affinity-purified from rabbit anti-serum by affinity-chromatography.
Dilution Range	WB 1:500-1:2000 ELISA 1:20000
Formulation	PBS, 50% Glycerol, 0.5% BSA and 0.02% Sodium Azide.
Isotype	IgG
Storage Instruction	Store at -20°C for up to 1 year from the date of receipt, and avoid repeat freeze-thaw cycles.

TARGET INFORMATION

Gene ID	8997
Gene Symbol	KALRN
Uniprot ID	KALRN_HUMAN
Immunogen	Synthesized peptide derived from Duo. at amino acid range: 810-890
Immunogen Region	810-890 Internal
Specificity	KALRN polyclonal antibody (Kalirin) binds to endogenous Kalirin at the amino acid region 810-890 Internal.
Immunogen Sequence	



Western blot analysis of KALRN Antibody. The lane on the right is blocked with the KALRN peptide.

This product is suitable for in-vitro studies under the RESEARCH USE ONLY [RUO] licence. This product must not be used as for diagnostic or other medical purposes.
St John's Laboratory Ltd, Knowledge Dock Business Centre, University Way, London, E16 2RD | Tel: 0208 223 3081