

Anti-ADGRG6 antibody (1060-1140 C-Term) (STJ92778)

STJ92778

GENERAL INFORMATION

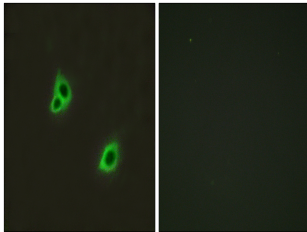
Product Type	Primary antibodies
Short Description	Rabbit polyclonal antibody anti-Adhesion G-Protein Coupled Receptor G6 (1060-1140 C-Term) is suitable for use in Western Blot, Immunofluorescence, Immunocytochemistry and ELISA research applications.
Applications	WB, IF, ICC, ELISA
Host/Source	Rabbit
Reactivity	Human, Mouse

PRODUCT PROPERTIES

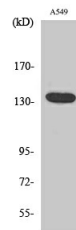
Clonality	Polyclonal
Clone ID	
Concentration	1 mg/mL
Conjugation	Unconjugated
Purification	The antibody was affinity-purified from rabbit anti-serum by affinity-chromatography.
Dilution Range	WB 1:500-1:2000 IF 1:200-1:1000 ELISA 1:20000
Formulation	PBS, 50% Glycerol, 0.5% BSA and 0.02% Sodium Azide.
Isotype	IgG
Storage Instruction	Store at -20°C for up to 1 year from the date of receipt, and avoid repeat freeze-thaw cycles.

TARGET INFORMATION

Gene ID	57211
Gene Symbol	ADGRG6
Uniprot ID	AGR66_HUMAN
Immunogen	The antiserum was produced against synthesized peptide derived from human GPR126 at amino acid range 1091-1140
Immunogen Region	1060-1140 C-Term
Specificity	ADGRG6 polyclonal antibody (Adhesion G-Protein Coupled Receptor G6) binds to endogenous Adhesion G-Protein Coupled Receptor G6 at the amino acid region 1060-1140 C-Term.
Immunogen Sequence	



Immunofluorescence analysis of HUVEC cells, using GPR126 Antibody. The picture on the right is blocked with the synthesized peptide.



Western blot analysis of various cells using DREG Polyclonal Antibody

This product is suitable for in-vitro studies under the RESEARCH USE ONLY [RUO] licence. This product must not be used as for diagnostic or other medical purposes.
St John's Laboratory Ltd, Knowledge Dock Business Centre, University Way, London, E16 2RD | Tel: 0208 223 3081