

Anti-STK17B antibody (220-300 Internal) (STJ92776)

STJ92776

GENERAL INFORMATION

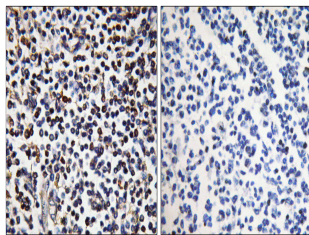
Product Type	Primary antibodies
Short Description	Rabbit polyclonal antibody anti-Serine/Threonine-Protein Kinase 17b (220-300 Internal) is suitable for use in Western Blot, Immunohistochemistry, Immunofluorescence and ELISA research applications.
Applications	WB, IHC-P, IF-P, ELISA
Host/Source	Rabbit
Reactivity	Human, Mouse, Rat

PRODUCT PROPERTIES

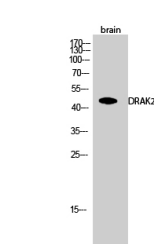
Clonality	Polyclonal
Clone ID	
Concentration	1 mg/mL
Conjugation	Unconjugated
Purification	The antibody was affinity-purified from rabbit anti-serum by affinity-chromatography.
Dilution Range	WB 1:500-1:2000 IHC 1:100-1:300 ELISA 1:40000
Formulation	PBS, 50% Glycerol, 0.5% BSA and 0.02% Sodium Azide.
Isotype	IgG
Storage Instruction	Store at -20°C for up to 1 year from the date of receipt, and avoid repeat freeze-thaw cycles.

TARGET INFORMATION

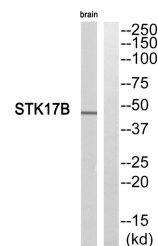
Gene ID	9262
Gene Symbol	STK17B
Uniprot ID	ST17B_HUMAN
Immunogen	The antiserum was produced against synthesized peptide derived from human STK17B at amino acid range 251-300
Immunogen Region	220-300 Internal
Specificity	STK17B polyclonal antibody (Serine/Threonine-Protein Kinase 17b) binds to endogenous Serine/Threonine-Protein Kinase 17b at the amino acid region 220-300 Internal.
Immunogen Sequence	



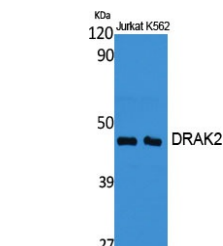
Immunohistochemistry analysis of paraffin-embedded human tonsil, using STK17B Antibody. The lane on the right is blocked with the STK17B peptide.



Western blot analysis of brain cells using DRAK2 Polyclonal Antibody cells nucleus extracted by Minute™ Cytoplasmic and Nuclear Fractionation kit (SC-003, Inventibiotech, MN, USA).



Western blot analysis of STK17B Antibody. The lane on the right is blocked with the STK17B peptide.



Western blot analysis of various cells using DRAK2 Polyclonal Antibody cells nucleus extracted by Minute™ Cytoplasmic and Nuclear Fractionation kit (SC-003, Inventibiotech, MN, USA).

This product is suitable for in-vitro studies under the RESEARCH USE ONLY [RUO] licence. This product must not be used as for diagnostic or other medical purposes.
St John's Laboratory Ltd, Knowledge Dock Business Centre, University Way, London, E16 2RD | Tel: 0208 223 3081