

Anti-DQX1 antibody (520-600 C-Term) (STJ92774)

STJ92774

GENERAL INFORMATION

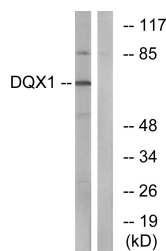
Product Type	Primary antibodies
Short Description	Rabbit polyclonal antibody anti-Atp-Dependent Rna Helicase Dqx1 (520-600 C-Term) is suitable for use in Western Blot and ELISA research applications.
Applications	WB, ELISA
Host/Source	Rabbit
Reactivity	Human, Mouse, Simian

PRODUCT PROPERTIES

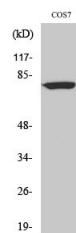
Clonality	Polyclonal
Clone ID	
Concentration	1 mg/mL
Conjugation	Unconjugated
Purification	The antibody was affinity-purified from rabbit anti-serum by affinity-chromatography.
Dilution Range	WB 1:500-1:2000 ELISA 1:20000
Formulation	PBS, 50% Glycerol, 0.5% BSA and 0.02% Sodium Azide.
Isotype	IgG
Storage Instruction	Store at -20°C for up to 1 year from the date of receipt, and avoid repeat freeze-thaw cycles.

TARGET INFORMATION

Gene ID	165545
Gene Symbol	DQX1
Uniprot ID	DQX1_HUMAN
Immunogen	The antiserum was produced against synthesized peptide derived from human DQX1 at amino acid range 551-600
Immunogen Region	520-600 C-Term
Specificity	DQX1 polyclonal antibody (Atp-Dependent Rna Helicase Dqx1) binds to endogenous Atp-Dependent Rna Helicase Dqx1 at the amino acid region 520-600 C-Term.
Immunogen Sequence	



Western blot analysis of lysates from COS7 cells, using DQX1 Antibody. The lane on the right is blocked with the synthesized peptide.



Western blot analysis of various cells using DQX1 Polyclonal Antibody cells nucleus extracted by Minute TM Cyttoplasmic and Nuclear Fractionation kit (SC-003, Inventibiotech, MN, USA).