

Anti-DCX antibody (180-260) (STJ92771)

STJ92771

GENERAL INFORMATION

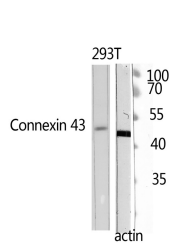
Product Type	Primary antibodies
Short Description	Rabbit polyclonal antibody anti-Neuronal Migration Protein Doublecortin (180-260) is suitable for use in Western Blot, Immunohistochemistry, Immunofluorescence and ELISA research applications.
Applications	WB, IHC-P, IF-P, ELISA
Host/Source	Rabbit
Reactivity	Human, Mouse, Rat

PRODUCT PROPERTIES

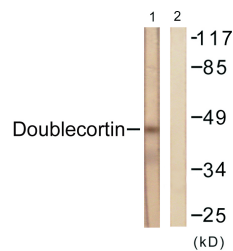
Clonality	Polyclonal
Clone ID	
Concentration	1 mg/mL
Conjugation	Unconjugated
Purification	The antibody was affinity-purified from rabbit anti-serum by affinity-chromatography.
Dilution Range	WB 1:500-1:2000 IHC 1:100-1:300 ELISA 1:10000
Formulation	PBS, 50% Glycerol, 0.5% BSA and 0.02% Sodium Azide.
Isotype	IgG
Storage Instruction	Store at -20°C for up to 1 year from the date of receipt, and avoid repeat freeze-thaw cycles.

TARGET INFORMATION

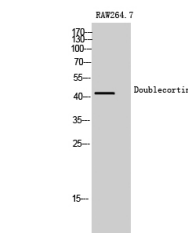
Gene ID	1641
Gene Symbol	DCX
Uniprot ID	DCX_HUMAN
Immunogen	The antiserum was produced against synthesized peptide derived from human Doublecortin at amino acid range 206-255
Immunogen Region	180-260
Specificity	DCX polyclonal antibody (Neuronal Migration Protein Doublecortin) binds to endogenous Neuronal Migration Protein Doublecortin at the amino acid region 180-260.
Immunogen Sequence	



Western blot analysis of 293T using Doublecortin Polyclonal Antibody. Antibody was diluted at 1:500



Western blot analysis of lysates from RAW264.7 cells, using Doublecortin Antibody. The lane on the right is blocked with the synthesized peptide.



Western blot analysis of RAW264.7 cells using Doublecortin Polyclonal Antibody diluted at 1: 500

This product is suitable for in-vitro studies under the RESEARCH USE ONLY [RUO] licence. This product must not be used as for diagnostic or other medical purposes.
St John's Laboratory Ltd, Knowledge Dock Business Centre, University Way, London, E16 2RD | Tel: 0208 223 3081