

Anti-DCX antibody (320-400) (STJ92770)

STJ92770

GENERAL INFORMATION

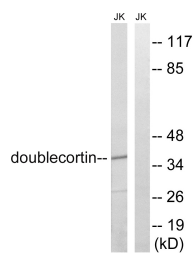
Product Type	Primary antibodies
Short Description	Rabbit polyclonal antibody anti-Neuronal Migration Protein Doublecortin (320-400) is suitable for use in Western Blot and ELISA research applications.
Applications	WB, ELISA
Host/Source	Rabbit
Reactivity	Human, Mouse, Rat

PRODUCT PROPERTIES

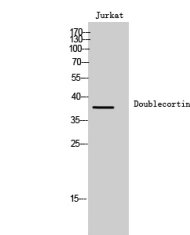
Clonality	Polyclonal
Clone ID	
Concentration	1 mg/mL
Conjugation	Unconjugated
Purification	The antibody was affinity-purified from rabbit anti-serum by affinity-chromatography.
Dilution Range	WB 1:500-1:2000 ELISA 1:10000
Formulation	PBS, 50% Glycerol, 0.5% BSA and 0.02% Sodium Azide.
Isotype	IgG
Storage Instruction	Store at -20°C for up to 1 year from the date of receipt, and avoid repeat freeze-thaw cycles.

TARGET INFORMATION

Gene ID	1641
Gene Symbol	DCX
Uniprot ID	DCX_HUMAN
Immunogen	The antiserum was produced against synthesized peptide derived from human Doublecortin at amino acid range 346-395
Immunogen Region	320-400
Specificity	DCX polyclonal antibody (Neuronal Migration Protein Doublecortin) binds to endogenous Neuronal Migration Protein Doublecortin at the amino acid region 320-400.
Immunogen Sequence	



Western blot analysis of lysates from Jurkat cells, using Doublecortin Antibody. The lane on the right is blocked with the synthesized peptide.



Western blot analysis of Jurkat cells using Doublecortin Polyclonal Antibody

This product is suitable for in-vitro studies under the RESEARCH USE ONLY [RUO] licence. This product must not be used as for diagnostic or other medical purposes.
St John's Laboratory Ltd, Knowledge Dock Business Centre, University Way, London, E16 2RD | Tel: 0208 223 3081