

Anti-DOK5 antibody (70-150 Internal) (STJ92764)

STJ92764

GENERAL INFORMATION

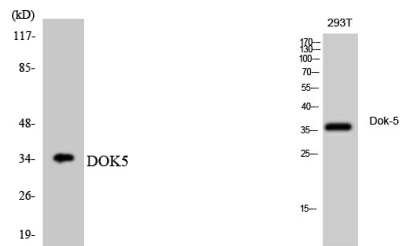
Product Type	Primary antibodies
Short Description	Rabbit polyclonal antibody anti-Docking Protein 5 (70-150 Internal) is suitable for use in Western Blot and ELISA research applications.
Applications	WB, ELISA
Host/Source	Rabbit
Reactivity	Human, Mouse

PRODUCT PROPERTIES

Clonality	Polyclonal
Clone ID	
Concentration	1 mg/mL
Conjugation	Unconjugated
Purification	The antibody was affinity-purified from rabbit anti-serum by affinity-chromatography.
Dilution Range	WB 1:500-1:2000 ELISA 1:20000
Formulation	PBS, 50% Glycerol, 0.5% BSA and 0.02% Sodium Azide.
Isotype	IgG
Storage Instruction	Store at -20°C for up to 1 year from the date of receipt, and avoid repeat freeze-thaw cycles.

TARGET INFORMATION

Gene ID	55816
Gene Symbol	DOK5
Uniprot ID	DOK5_HUMAN
Immunogen	The antiserum was produced against synthesized peptide derived from human DOK5 at amino acid range 101-150
Immunogen Region	70-150 Internal
Specificity	DOK5 polyclonal antibody (Docking Protein 5) binds to endogenous Docking Protein 5 at the amino acid region 70-150 Internal.
Immunogen Sequence	



Western blot analysis of the lysates from HT-29 cells using DOK5 antibody.

Western blot analysis of 293T cells using Dok-5 Polyclonal Antibody diluted at 1: 500

This product is suitable for in-vitro studies under the RESEARCH USE ONLY [RUO] licence. This product must not be used as for diagnostic or other medical purposes.
St John's Laboratory Ltd, Knowledge Dock Business Centre, University Way, London, E16 2RD | Tel: 0208 223 3081