

## Anti-DOK4 antibody (30-110 N-Term) (STJ92763)

STJ92763

### GENERAL INFORMATION

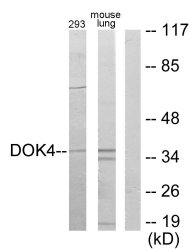
<b>Product Type</b>	Primary antibodies
<b>Short Description</b>	Rabbit polyclonal antibody anti-Docking Protein 4 (30-110 N-Term) is suitable for use in Western Blot, Immunohistochemistry, Immunofluorescence, Immunocytochemistry and ELISA research applications.
<b>Applications</b>	WB, IHC-P, IF, ICC, ELISA
<b>Host/Source</b>	Rabbit
<b>Reactivity</b>	Human, Mouse

### PRODUCT PROPERTIES

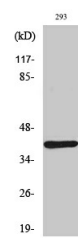
<b>Clonality</b>	Polyclonal
<b>Clone ID</b>	
<b>Concentration</b>	1 mg/mL
<b>Conjugation</b>	Unconjugated
<b>Purification</b>	The antibody was affinity-purified from rabbit anti-serum by affinity-chromatography.
<b>Dilution Range</b>	WB 1:500-1:2000 IHC 1:100-1:300 IF 1:200-1:1000 ELISA 1:20000
<b>Formulation</b>	PBS, 50% Glycerol, 0.5% BSA and 0.02% Sodium Azide.
<b>Isotype</b>	IgG
<b>Storage Instruction</b>	Store at -20°C for up to 1 year from the date of receipt, and avoid repeat freeze-thaw cycles.

### TARGET INFORMATION

<b>Gene ID</b>	55715
<b>Gene Symbol</b>	DOK4
<b>Uniprot ID</b>	DOK4_HUMAN
<b>Immunogen</b>	The antiserum was produced against synthesized peptide derived from human DOK4 at amino acid range 11-60
<b>Immunogen Region</b>	30-110 N-Term
<b>Specificity</b>	DOK4 polyclonal antibody (Docking Protein 4) binds to endogenous Docking Protein 4 at the amino acid region 30-110 N-Term.
<b>Immunogen Sequence</b>	



Western blot analysis of lysates from 293 and mouse lung, using DOK4 Antibody. The lane on the right is blocked with the synthesized peptide.



Western blot analysis of various cells using Dok-4 Polyclonal Antibody