

Anti-DOK2 antibody (240-320) (STJ92761)

STJ92761

GENERAL INFORMATION

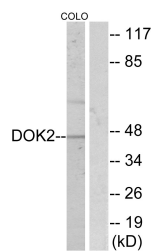
Product Type	Primary antibodies
Short Description	Rabbit polyclonal antibody anti-Docking Protein 2 (240-320) is suitable for use in Western Blot, Immunohistochemistry, Immunofluorescence, Immunocytochemistry and ELISA research applications.
Applications	WB, IHC-P, IF, ICC, ELISA
Host/Source	Rabbit
Reactivity	Human, Mouse

PRODUCT PROPERTIES

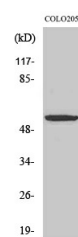
Clonality	Polyclonal
Clone ID	
Concentration	1 mg/mL
Conjugation	Unconjugated
Purification	The antibody was affinity-purified from rabbit anti-serum by affinity-chromatography.
Dilution Range	WB 1:500-1:2000 IHC 1:100-1:300 IF 1:200-1:1000 ELISA 1:20000
Formulation	PBS, 50% Glycerol, 0.5% BSA and 0.02% Sodium Azide.
Isotype	IgG
Storage Instruction	Store at -20°C for up to 1 year from the date of receipt, and avoid repeat freeze-thaw cycles.

TARGET INFORMATION

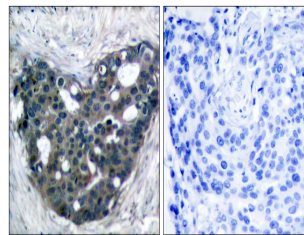
Gene ID	9046
Gene Symbol	DOK2
Uniprot ID	DOK2_HUMAN
Immunogen	The antiserum was produced against synthesized peptide derived from human p56 Dok-2 at amino acid range 266-315
Immunogen Region	240-320
Specificity	DOK2 polyclonal antibody (Docking Protein 2) binds to endogenous Docking Protein 2 at the amino acid region 240-320.
Immunogen Sequence	



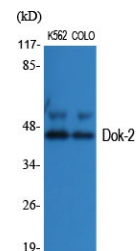
Western blot analysis of lysates from COLO205, using p56 Dok-2 Antibody. The lane on the right is blocked with the synthesized peptide.



Western blot analysis of COLO205 cells using Dok-2 Polyclonal Antibody



Immunohistochemistry analysis of paraffin-embedded human breast carcinoma tissue, using p56 Dok-2 Antibody. The picture on the right is blocked with the synthesized peptide.



Western blot analysis of various cells using Dok-2 Polyclonal Antibody