

Anti-DOK2 antibody (290-370) (STJ92760)

STJ92760

GENERAL INFORMATION

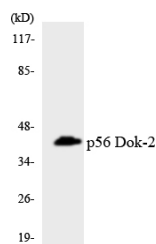
Product Type	Primary antibodies
Short Description	Rabbit polyclonal antibody anti-Docking Protein 2 (290-370) is suitable for use in Western Blot, Immunohistochemistry, Immunofluorescence and ELISA research applications.
Applications	WB, IHC-P, IF-P, ELISA
Host/Source	Rabbit
Reactivity	Human, Mouse

PRODUCT PROPERTIES

Clonality	Polyclonal
Clone ID	
Concentration	1 mg/mL
Conjugation	Unconjugated
Purification	The antibody was affinity-purified from rabbit anti-serum by affinity-chromatography.
Dilution Range	WB 1:500-1:2000 IHC 1:100-1:300 ELISA 1:5000
Formulation	PBS, 50% Glycerol, 0.5% BSA and 0.02% Sodium Azide.
Isotype	IgG
Storage Instruction	Store at -20°C for up to 1 year from the date of receipt, and avoid repeat freeze-thaw cycles.

TARGET INFORMATION

Gene ID	9046
Gene Symbol	DOK2
Uniprot ID	DOK2_HUMAN
Immunogen	The antiserum was produced against synthesized peptide derived from human p56 Dok-2 at amino acid range 316-365
Immunogen Region	290-370
Specificity	DOK2 polyclonal antibody (Docking Protein 2) binds to endogenous Docking Protein 2 at the amino acid region 290-370.
Immunogen Sequence	



Western blot analysis of the lysates from HeLa cells using p56 Dok-2 antibody.

This product is suitable for in-vitro studies under the RESEARCH USE ONLY [RUO] licence. This product must not be used as for diagnostic or other medical purposes.
St John's Laboratory Ltd, Knowledge Dock Business Centre, University Way, London, E16 2RD | Tel: 0208 223 3081