

Anti-DOK1 antibody (340-420) (STJ92759)

STJ92759

GENERAL INFORMATION

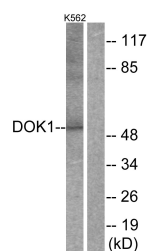
Product Type	Primary antibodies
Short Description	Rabbit polyclonal antibody anti-Docking Protein 1 (340-420) is suitable for use in Western Blot, Immunohistochemistry, Immunofluorescence and ELISA research applications.
Applications	WB, IHC-P, IF-P, ELISA
Host/Source	Rabbit
Reactivity	Human, Mouse, Rat

PRODUCT PROPERTIES

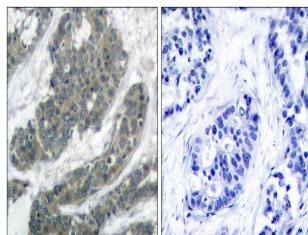
Clonality	Polyclonal
Clone ID	
Concentration	1 mg/mL
Conjugation	Unconjugated
Purification	The antibody was affinity-purified from rabbit anti-serum by affinity-chromatography.
Dilution Range	WB 1:500-1:2000 IHC 1:100-1:300 ELISA 1:20000
Formulation	PBS, 50% Glycerol, 0.5% BSA and 0.02% Sodium Azide.
Isotype	IgG
Storage Instruction	Store at -20°C for up to 1 year from the date of receipt, and avoid repeat freeze-thaw cycles.

TARGET INFORMATION

Gene ID	1796
Gene Symbol	DOK1
Uniprot ID	DOK1_HUMAN
Immunogen	The antiserum was produced against synthesized peptide derived from human p62 Dok at amino acid range 365-414
Immunogen Region	340-420
Specificity	DOK1 polyclonal antibody (Docking Protein 1) binds to endogenous Docking Protein 1 at the amino acid region 340-420.
Immunogen Sequence	



Western blot analysis of lysates from K562 cells, treated with Starvation 24h, using p62 Dok Antibody. The lane on the right is blocked with the synthesized peptide.



Immunohistochemistry analysis of paraffin-embedded human breast carcinoma tissue, using p62 Dok Antibody. The picture on the right is blocked with the synthesized peptide.