

Anti-CDK2AP2 antibody (30-110 Internal) (STJ92755)

STJ92755

GENERAL INFORMATION

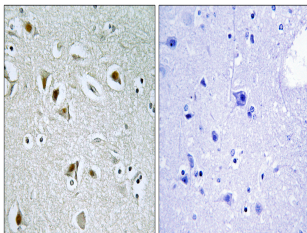
Product Type	Primary antibodies
Short Description	Rabbit polyclonal antibody anti-Cyclin-Dependent Kinase 2-Associated Protein 2 (30-110 Internal) is suitable for use in Immunohistochemistry, Immunofluorescence and ELISA research applications.
Applications	IHC-P, IF-P, ELISA
Host/Source	Rabbit
Reactivity	Human, Mouse

PRODUCT PROPERTIES

Clonality	Polyclonal
Clone ID	
Concentration	1 mg/mL
Conjugation	Unconjugated
Purification	The antibody was affinity-purified from rabbit anti-serum by affinity-chromatography.
Dilution	IHC 1:100-1:300
Range	ELISA 1:5000
Formulation	PBS, 50% Glycerol, 0.5% BSA and 0.02% Sodium Azide.
Isotype	IgG
Storage	Store at -20°C for up to 1 year from the date of receipt, and avoid repeat freeze-thaw cycles.
Instruction	

TARGET INFORMATION

Gene ID	10263
Gene Symbol	CDK2AP2
Uniprot ID	CDKA2_HUMAN
Immunogen	The antiserum was produced against synthesized peptide derived from human CDKA2 at amino acid range 51-100
Immunogen Region	30-110 Internal
Specificity	CDK2AP2 polyclonal antibody (Cyclin-Dependent Kinase 2-Associated Protein 2) binds to endogenous Cyclin-Dependent Kinase 2-Associated Protein 2 at the amino acid region 30-110 Internal.
Immunogen Sequence	



Immunohistochemistry analysis of paraffin-embedded human brain tissue, using CDK2AP2 Antibody. The picture on the right is blocked with the synthesized peptide.