

Anti-PRKDC antibody (2580-2660) (STJ92747)

STJ92747

GENERAL INFORMATION

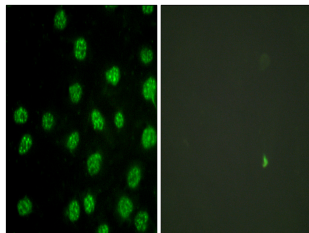
Product Type	Primary antibodies
Short Description	Rabbit polyclonal antibody anti-Dna-Dependent Protein Kinase Catalytic Subunit (2580-2660) is suitable for use in Immunofluorescence, Immunocytochemistry and ELISA research applications.
Applications	IF, ICC, ELISA
Host/Source	Rabbit
Reactivity	Human, Rat, Mouse

PRODUCT PROPERTIES

Clonality	Polyclonal
Clone ID	
Concentration	1 mg/mL
Conjugation	Unconjugated
Purification	The antibody was affinity-purified from rabbit anti-serum by affinity-chromatography.
Dilution Range	IF 1:200-1:1000 ELISA 1:20000
Formulation	PBS, 50% Glycerol, 0.5% BSA and 0.02% Sodium Azide.
Isotype	IgG
Storage	Store at -20°C for up to 1 year from the date of receipt, and avoid repeat freeze-thaw cycles.
Instruction	

TARGET INFORMATION

Gene ID	5591
Gene Symbol	PRKDC
Uniprot ID	PRKDC_HUMAN
Immunogen	The antiserum was produced against synthesized peptide derived from human DNA-PK at amino acid range 2613-2662
Immunogen Region	2580-2660
Specificity	PRKDC polyclonal antibody (Dna-Dependent Protein Kinase Catalytic Subunit) binds to endogenous Dna-Dependent Protein Kinase Catalytic Subunit at the amino acid region 2580-2660.
Immunogen Sequence	



Immunofluorescence analysis of HUVEC cells, using DNA-PK Antibody. The picture on the right is blocked with the synthesized peptide.

This product is suitable for in-vitro studies under the RESEARCH USE ONLY [RUO] licence. This product must not be used as for diagnostic or other medical purposes.
St John's Laboratory Ltd, Knowledge Dock Business Centre, University Way, London, E16 2RD | Tel: 0208 223 3081