

## Anti-POLI antibody (610-690 C-Term) (STJ92742)

STJ92742

### GENERAL INFORMATION

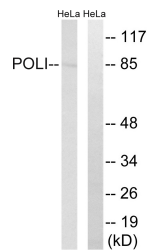
<b>Product Type</b>	Primary antibodies
<b>Short Description</b>	Rabbit polyclonal antibody anti-Dna Polymerase Iota (610-690 C-Term) is suitable for use in Western Blot and ELISA research applications.
<b>Applications</b>	WB, ELISA
<b>Host/Source</b>	Rabbit
<b>Reactivity</b>	Human, Rat, Mouse

### PRODUCT PROPERTIES

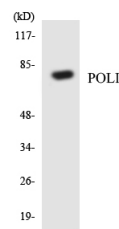
<b>Clonality</b>	Polyclonal
<b>Clone ID</b>	
<b>Concentration</b>	1 mg/mL
<b>Conjugation</b>	Unconjugated
<b>Purification</b>	The antibody was affinity-purified from rabbit anti-serum by affinity-chromatography.
<b>Dilution Range</b>	WB 1:500-1:2000 ELISA 1:40000
<b>Formulation</b>	PBS, 50% Glycerol, 0.5% BSA and 0.02% Sodium Azide.
<b>Isotype</b>	IgG
<b>Storage Instruction</b>	Store at -20°C for up to 1 year from the date of receipt, and avoid repeat freeze-thaw cycles.

### TARGET INFORMATION

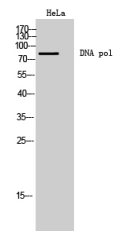
<b>Gene ID</b>	11201
<b>Gene Symbol</b>	POLI
<b>Uniprot ID</b>	POLI_HUMAN
<b>Immunogen</b>	The antiserum was produced against synthesized peptide derived from human POLI at amino acid range 641-690
<b>Immunogen Region</b>	610-690 C-Term
<b>Specificity</b>	POLI polyclonal antibody (Dna Polymerase Iota) binds to endogenous Dna Polymerase Iota at the amino acid region 610-690 C-Term.
<b>Immunogen Sequence</b>	



Western blot analysis of lysates from HeLa cells, using POLI Antibody. The lane on the right is blocked with the synthesized peptide.



Western blot analysis of the lysates from HeLa cells using POLI antibody.



Western blot analysis of HeLa cells using DNA pol Iota Polyclonal Antibody cells nucleus extracted by Minute TM Cytoplasmic and Nuclear Fractionation kit (SC-003, Inventiotech, MN, USA).

This product is suitable for in-vitro studies under the RESEARCH USE ONLY [RUO] licence. This product must not be used as for diagnostic or other medical purposes.  
St John's Laboratory Ltd, Knowledge Dock Business Centre, University Way, London, E16 2RD | Tel: 0208 223 3081