

Anti-REV3L antibody (200-280 N-Term) (STJ92740)

STJ92740

GENERAL INFORMATION

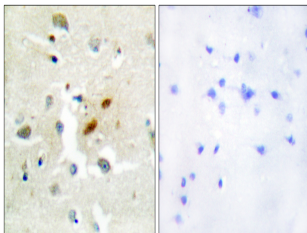
Product Type	Primary antibodies
Short Description	Rabbit polyclonal antibody anti-Dna Polymerase Zeta Catalytic Subunit (200-280 N-Term) is suitable for use in Immunohistochemistry, Immunofluorescence and ELISA research applications.
Applications	IHC-P, IF-P, ELISA
Host/Source	Rabbit
Reactivity	Human, Mouse

PRODUCT PROPERTIES

Clonality	Polyclonal
Clone ID	
Concentration	1 mg/mL
Conjugation	Unconjugated
Purification	The antibody was affinity-purified from rabbit anti-serum by affinity-chromatography.
Dilution Range	IHC 1:100-1:300 ELISA 1:20000
Formulation	PBS, 50% Glycerol, 0.5% BSA and 0.02% Sodium Azide.
Isotype	IgG
Storage Instruction	Store at -20°C for up to 1 year from the date of receipt, and avoid repeat freeze-thaw cycles.

TARGET INFORMATION

Gene ID	5980
Gene Symbol	REV3L
Uniprot ID	REV3L_HUMAN
Immunogen	The antiserum was produced against synthesized peptide derived from human DNA Polymerase zeta at amino acid range 231-280
Immunogen Region	200-280 N-Term
Specificity	REV3L polyclonal antibody (Dna Polymerase Zeta Catalytic Subunit) binds to endogenous Dna Polymerase Zeta Catalytic Subunit at the amino acid region 200-280 N-Term.
Immunogen Sequence	



Immunohistochemistry analysis of paraffin-embedded human brain tissue, using DNA Polymerase zeta Antibody. The picture on the right is blocked with the synthesized peptide.