

## Anti-POLD3 antibody (380-460 C-Term) (STJ92737)

STJ92737

### GENERAL INFORMATION

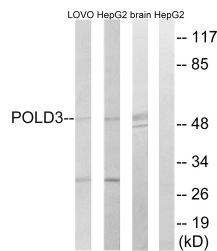
<b>Product Type</b>	Primary antibodies
<b>Short Description</b>	Rabbit polyclonal antibody anti-Dna Polymerase Delta Subunit 3 (380-460 C-Term) is suitable for use in Western Blot and ELISA research applications.
<b>Applications</b>	WB, ELISA
<b>Host/Source</b>	Rabbit
<b>Reactivity</b>	Human, Mouse, Rat

### PRODUCT PROPERTIES

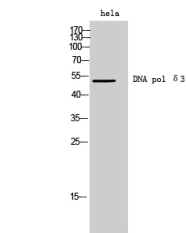
<b>Clonality</b>	Polyclonal
<b>Clone ID</b>	
<b>Concentration</b>	1 mg/mL
<b>Conjugation</b>	Unconjugated
<b>Purification</b>	The antibody was affinity-purified from rabbit anti-serum by affinity-chromatography.
<b>Dilution Range</b>	WB 1:500-1:2000 ELISA 1:20000
<b>Formulation</b>	PBS, 50% Glycerol, 0.5% BSA and 0.02% Sodium Azide.
<b>Isotype</b>	IgG
<b>Storage Instruction</b>	Store at -20°C for up to 1 year from the date of receipt, and avoid repeat freeze-thaw cycles.

### TARGET INFORMATION

<b>Gene ID</b>	<a href="#">10714</a>
<b>Gene Symbol</b>	<a href="#">POLD3</a>
<b>Uniprot ID</b>	<a href="#">DPOD3_HUMAN</a>
<b>Immunogen</b>	The antiserum was produced against synthesized peptide derived from human POLD3 at amino acid range 411-460
<b>Immunogen Region</b>	380-460 C-Term
<b>Specificity</b>	POLD3 polyclonal antibody (Dna Polymerase Delta Subunit 3) binds to endogenous Dna Polymerase Delta Subunit 3 at the amino acid region 380-460 C-Term.
<b>Immunogen Sequence</b>	



Western blot analysis of lysates from LOVO, HepG2, and mouse brain cells, using POLD3 Antibody. The lane on the right is blocked with the synthesized peptide.



Western blot analysis of hela cells using DNA pol Delta 3 Polyclonal Antibody diluted at 1:500. Cells nucleus extracted by Minute™ Cytoplasmic and Nuclear Fractionation kit (SC-003, Inventibiotech, MN, USA).