

Anti-POLD1 antibody (1020-1100 C-Term) (STJ92736)

STJ92736

GENERAL INFORMATION

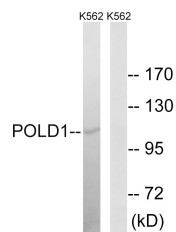
Product Type	Primary antibodies
Short Description	Rabbit polyclonal antibody anti-Dna Polymerase Delta Catalytic Subunit (1020-1100 C-Term) is suitable for use in Western Blot and ELISA research applications.
Applications	WB, ELISA
Host/Source	Rabbit
Reactivity	Human, Mouse, Rat

PRODUCT PROPERTIES

Clonality	Polyclonal
Clone ID	
Concentration	1 mg/mL
Conjugation	Unconjugated
Purification	The antibody was affinity-purified from rabbit anti-serum by affinity-chromatography.
Dilution Range	WB 1:500-1:2000 ELISA 1:40000
Formulation	PBS, 50% Glycerol, 0.5% BSA and 0.02% Sodium Azide.
Isotype	IgG
Storage Instruction	Store at -20°C for up to 1 year from the date of receipt, and avoid repeat freeze-thaw cycles.

TARGET INFORMATION

Gene ID	5424
Gene Symbol	POLD1
Uniprot ID	DPOD1_HUMAN
Immunogen	The antiserum was produced against synthesized peptide derived from human POLD1 at amino acid range 1051-1100
Immunogen Region	1020-1100 C-Term
Specificity	POLD1 polyclonal antibody (Dna Polymerase Delta Catalytic Subunit) binds to endogenous Dna Polymerase Delta Catalytic Subunit at the amino acid region 1020-1100 C-Term.
Immunogen Sequence	



Western blot analysis of lysates from K562 cells, using POLD1 Antibody. The lane on the right is blocked with the synthesized peptide.

This product is suitable for in-vitro studies under the RESEARCH USE ONLY [RUO] licence. This product must not be used as for diagnostic or other medical purposes.
St John's Laboratory Ltd, Knowledge Dock Business Centre, University Way, London, E16 2RD | Tel: 0208 223 3081