

Anti-POLG2 antibody (260-340 Internal) (STJ92735)

STJ92735

GENERAL INFORMATION

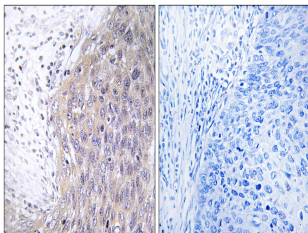
Product Type	Primary antibodies
Short Description	Rabbit polyclonal antibody anti-Dna Polymerase Subunit Gamma-2-Mitochondrial (260-340 Internal) is suitable for use in Immunohistochemistry, Immunofluorescence and ELISA research applications.
Applications	IHC-P, IF-P, ELISA
Host/Source	Rabbit
Reactivity	Human, Rat, Mouse

PRODUCT PROPERTIES

Clonality	Polyclonal
Clone ID	
Concentration	1 mg/mL
Conjugation	Unconjugated
Purification	The antibody was affinity-purified from rabbit anti-serum by affinity-chromatography.
Dilution	IHC 1:100-1:300
Range	ELISA 1:20000
Formulation	PBS, 50% Glycerol, 0.5% BSA and 0.02% Sodium Azide.
Isotype	IgG
Storage	Store at -20°C for up to 1 year from the date of receipt, and avoid repeat freeze-thaw cycles.
Instruction	

TARGET INFORMATION

Gene ID	11232
Gene Symbol	POLG2
Uniprot ID	DPOG2_HUMAN
Immunogen	The antiserum was produced against synthesized peptide derived from human POLG2 at amino acid range 291-340
Immunogen Region	260-340 Internal
Specificity	POLG2 polyclonal antibody (Dna Polymerase Subunit Gamma-2-Mitochondrial) binds to endogenous Dna Polymerase Subunit Gamma-2-Mitochondrial at the amino acid region 260-340 Internal.
Immunogen Sequence	



Immunohistochemistry analysis of paraffin-embedded human cervix carcinoma tissue, using POLG2 Antibody. The picture on the right is blocked with the synthesized peptide.