

## Anti-POLB antibody (270-350 C-Term) (STJ92734)

STJ92734

### GENERAL INFORMATION

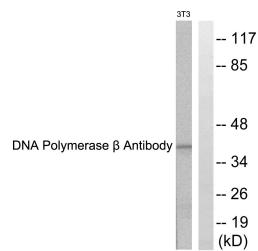
<b>Product Type</b>	Primary antibodies
<b>Short Description</b>	Rabbit polyclonal antibody anti-Dna Polymerase Beta (270-350 C-Term) is suitable for use in Western Blot, Immunohistochemistry, Immunofluorescence and ELISA research applications.
<b>Applications</b>	WB, IHC-P, IF-P, ELISA
<b>Host/Source</b>	Rabbit
<b>Reactivity</b>	Human, Mouse, Rat

### PRODUCT PROPERTIES

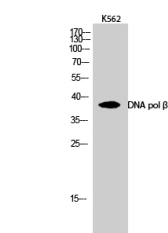
<b>Clonality</b>	Polyclonal
<b>Clone ID</b>	
<b>Concentration</b>	1 mg/mL
<b>Conjugation</b>	Unconjugated
<b>Purification</b>	The antibody was affinity-purified from rabbit anti-serum by affinity-chromatography.
<b>Dilution Range</b>	WB 1:500-1:2000 IHC 1:100-1:300 ELISA 1:10000
<b>Formulation</b>	PBS, 50% Glycerol, 0.5% BSA and 0.02% Sodium Azide.
<b>Isotype</b>	IgG
<b>Storage Instruction</b>	Store at -20°C for up to 1 year from the date of receipt, and avoid repeat freeze-thaw cycles.

### TARGET INFORMATION

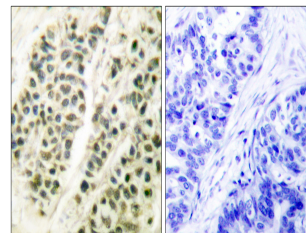
<b>Gene ID</b>	5423
<b>Gene Symbol</b>	POLB
<b>Uniprot ID</b>	DPOLB_HUMAN
<b>Immunogen</b>	The antiserum was produced against synthesized peptide derived from human DNA Polymerase beta at amino acid range 286-335
<b>Immunogen Region</b>	270-350 C-Term
<b>Specificity</b>	POLB polyclonal antibody (Dna Polymerase Beta) binds to endogenous Dna Polymerase Beta at the amino acid region 270-350 C-Term.
<b>Immunogen Sequence</b>	



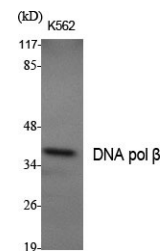
Western blot analysis of lysates from NIH/3T3 cells, using DNA Polymerase beta Antibody. The lane on the right is blocked with the synthesized peptide.



Western blot analysis of K562 cells using DNA pol Beta Polyclonal Antibody



Immunohistochemistry analysis of paraffin-embedded human breast carcinoma tissue, using DNA Polymerase beta Antibody. The picture on the right is blocked with the synthesized peptide.



Western blot analysis of various cells using DNA pol Beta Polyclonal Antibody