

## Anti-LIG4 antibody (560-640 Internal) (STJ92732)

STJ92732

### GENERAL INFORMATION

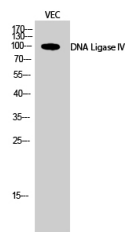
<b>Product Type</b>	Primary antibodies
<b>Short Description</b>	Rabbit polyclonal antibody anti-Dna Ligase 4 (560-640 Internal) is suitable for use in Western Blot, Immunohistochemistry, Immunofluorescence, Immunocytochemistry and ELISA research applications.
<b>Applications</b>	WB, IHC-P, IF, ICC, ELISA
<b>Host/Source</b>	Rabbit
<b>Reactivity</b>	Human, Rat, Mouse

### PRODUCT PROPERTIES

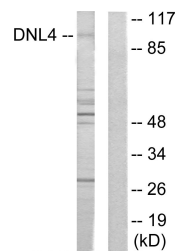
<b>Clonality</b>	Polyclonal
<b>Clone ID</b>	
<b>Concentration</b>	1 mg/mL
<b>Conjugation</b>	Unconjugated
<b>Purification</b>	The antibody was affinity-purified from rabbit anti-serum by affinity-chromatography.
<b>Dilution Range</b>	WB 1:500-1:2000 IHC 1:100-1:300 IF 1:200-1:1000 ELISA 1:20000
<b>Formulation</b>	PBS, 50% Glycerol, 0.5% BSA and 0.02% Sodium Azide.
<b>Isotype</b>	IgG
<b>Storage Instruction</b>	Store at -20°C for up to 1 year from the date of receipt, and avoid repeat freeze-thaw cycles.

### TARGET INFORMATION

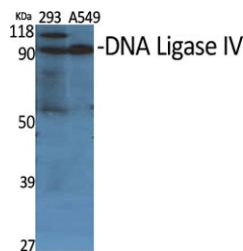
<b>Gene ID</b>	3981
<b>Gene Symbol</b>	LIG4
<b>Uniprot ID</b>	DNL4_HUMAN
<b>Immunogen</b>	The antiserum was produced against synthesized peptide derived from human DNL4 at amino acid range 591-640
<b>Immunogen Region</b>	560-640 Internal
<b>Specificity</b>	LIG4 polyclonal antibody (Dna Ligase 4) binds to endogenous Dna Ligase 4 at the amino acid region 560-640 Internal.
<b>Immunogen Sequence</b>	



Western blot analysis of VEC cells using DNA Ligase IV Polyclonal Antibody diluted at 1: 500



Western blot analysis of lysates from Jurkat cells, using DNL4 Antibody. The lane on the right is blocked with the synthesized peptide.



Western blot analysis of various cells using DNA Ligase IV Polyclonal Antibody diluted at 1: 500

This product is suitable for in-vitro studies under the RESEARCH USE ONLY [RUO] licence. This product must not be used as for diagnostic or other medical purposes.  
St John's Laboratory Ltd, Knowledge Dock Business Centre, University Way, London, E16 2RD | Tel: 0208 223 3081