

Anti-DMPK antibody (30-110 N-Term) (STJ92728)

STJ92728

GENERAL INFORMATION

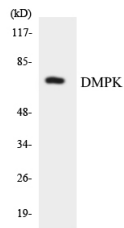
Product Type	Primary antibodies
Short Description	Rabbit polyclonal antibody anti-Myotonin-Protein Kinase (30-110 N-Term) is suitable for use in Western Blot and ELISA research applications.
Applications	WB, ELISA
Host/Source	Rabbit
Reactivity	Human, Rat, Mouse

PRODUCT PROPERTIES

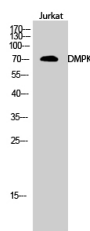
Clonality	Polyclonal
Clone ID	
Concentration	1 mg/mL
Conjugation	Unconjugated
Purification	The antibody was affinity-purified from rabbit anti-serum by affinity-chromatography.
Dilution Range	WB 1:500-1:2000 ELISA 1:40000
Formulation	PBS, 50% Glycerol, 0.5% BSA and 0.02% Sodium Azide.
Isotype	IgG
Storage Instruction	Store at -20°C for up to 1 year from the date of receipt, and avoid repeat freeze-thaw cycles.

TARGET INFORMATION

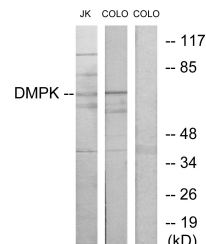
Gene ID	1760
Gene Symbol	DMPK
Uniprot ID	DMPK_HUMAN
Immunogen	The antiserum was produced against synthesized peptide derived from human DMPK at amino acid range 11-60
Immunogen Region	30-110 N-Term
Specificity	DMPK polyclonal antibody (Myotonin-Protein Kinase) binds to endogenous Myotonin-Protein Kinase at the amino acid region 30-110 N-Term.
Immunogen Sequence	



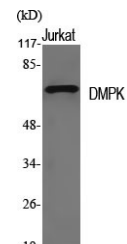
Western blot analysis of the lysates from HT-29 cells using DMPK antibody.



Western blot analysis of Jurkat cells using DMPK Polyclonal Antibody



Western blot analysis of lysates from Jurkat and COLO205 cells, using DMPK Antibody. The lane on the right is blocked with the synthesized peptide.



Western blot analysis of various cells using DMPK Polyclonal Antibody

This product is suitable for in-vitro studies under the RESEARCH USE ONLY [RUO] licence. This product must not be used as for diagnostic or other medical purposes.
 St John's Laboratory Ltd, Knowledge Dock Business Centre, University Way, London, E16 2RD | Tel: 0208 223 3081