

Anti-DMGDH antibody (790-870 C-Term) (STJ92727)

STJ92727

GENERAL INFORMATION

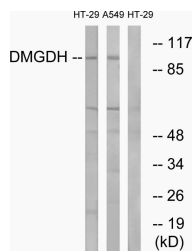
Product Type	Primary antibodies
Short Description	Rabbit polyclonal antibody anti-Dimethylglycine Dehydrogenase-Mitochondrial (790-870 C-Term) is suitable for use in Western Blot, Immunohistochemistry, Immunofluorescence and ELISA research applications.
Applications	WB, IHC-P, IF-P, ELISA
Host/Source	Rabbit
Reactivity	Human, Rat, Mouse

PRODUCT PROPERTIES

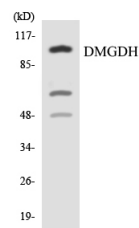
Clonality	Polyclonal
Clone ID	
Concentration	1 mg/mL
Conjugation	Unconjugated
Purification	The antibody was affinity-purified from rabbit anti-serum by affinity-chromatography.
Dilution Range	WB 1:500-1:2000 IHC 1:100-1:300 ELISA 1:20000
Formulation	PBS, 50% Glycerol, 0.5% BSA and 0.02% Sodium Azide.
Isotype	IgG
Storage Instruction	Store at -20°C for up to 1 year from the date of receipt, and avoid repeat freeze-thaw cycles.

TARGET INFORMATION

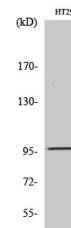
Gene ID	29958
Gene Symbol	DMGDH
Uniprot ID	M2GD_HUMAN
Immunogen Region	The antiserum was produced against synthesized peptide derived from human DMGDH at amino acid range 817-866
Immunogen Region	790-870 C-Term
Specificity	DMGDH polyclonal antibody (Dimethylglycine Dehydrogenase-Mitochondrial) binds to endogenous Dimethylglycine Dehydrogenase-Mitochondrial at the amino acid region 790-870 C-Term.
Immunogen Sequence	



Western blot analysis of lysates from HT-29 and A549 cells, using DMGDH Antibody. The lane on the right is blocked with the synthesized peptide.



Western blot analysis of the lysates from HeLa cells using DMGDH antibody.



Western blot analysis of various cells using DMGDH Polyclonal Antibody

This product is suitable for in-vitro studies under the RESEARCH USE ONLY [RUO] licence. This product must not be used as for diagnostic or other medical purposes.
St John's Laboratory Ltd, Knowledge Dock Business Centre, University Way, London, E16 2RD | Tel: 0208 223 3081