

Anti-DLX3 antibody (40-120 Internal) (STJ92723)

STJ92723

GENERAL INFORMATION

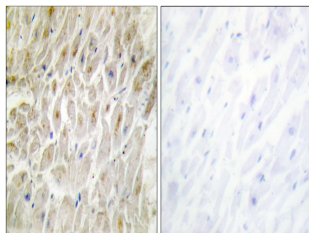
Product Type	Primary antibodies
Short Description	Rabbit polyclonal antibody anti-Homeobox Protein Dlx-3 (40-120 Internal) is suitable for use in Western Blot, Immunohistochemistry, Immunofluorescence and ELISA research applications.
Applications	WB, IHC-P, IF-P, ELISA
Host/Source	Rabbit
Reactivity	Human, Mouse

PRODUCT PROPERTIES

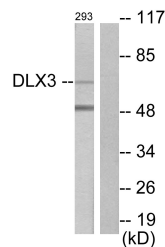
Clonality	Polyclonal
Clone ID	
Concentration	1 mg/mL
Conjugation	Unconjugated
Purification	The antibody was affinity-purified from rabbit anti-serum by affinity-chromatography.
Dilution Range	WB 1:500-1:2000 IHC 1:100-1:300 ELISA 1:40000
Formulation	PBS, 50% Glycerol, 0.5% BSA and 0.02% Sodium Azide.
Isotype	IgG
Storage Instruction	Store at -20°C for up to 1 year from the date of receipt, and avoid repeat freeze-thaw cycles.

TARGET INFORMATION

Gene ID	1747
Gene Symbol	DLX3
Uniprot ID	DLX3_HUMAN
Immunogen	The antiserum was produced against synthesized peptide derived from human DLX3 at amino acid range 71-120
Immunogen Region	40-120 Internal
Specificity	DLX3 polyclonal antibody (Homeobox Protein Dlx-3) binds to endogenous Homeobox Protein Dlx-3 at the amino acid region 40-120 Internal.
Immunogen Sequence	



Immunohistochemistry analysis of paraffin-embedded human heart tissue, using DLX3 Antibody. The picture on the right is blocked with the synthesized peptide.



Western blot analysis of lysates from 293 cells, using DLX3 Antibody. The lane on the right is blocked with the synthesized peptide.



Western blot analysis of various cells using Dlx-3 Polyclonal Antibody cells nucleus extracted by Minute™ Cytoplasmic and Nuclear Fractionation kit (SC-003, Inventiotech, MN, USA).

This product is suitable for in-vitro studies under the RESEARCH USE ONLY [RUO] licence. This product must not be used as for diagnostic or other medical purposes.
St John's Laboratory Ltd, Knowledge Dock Business Centre, University Way, London, E16 2RD | Tel: 0208 223 3081