

Anti-DLEC1 antibody (1-80 N-Term) (STJ92722)

STJ92722

GENERAL INFORMATION

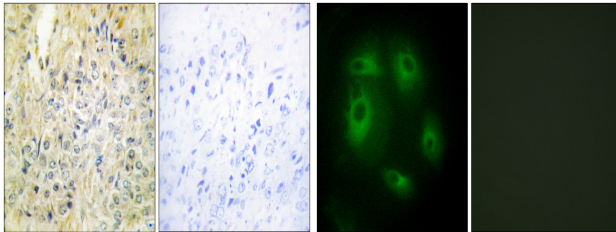
Product Type	Primary antibodies
Short Description	Rabbit polyclonal antibody anti-Deleted In Lung And Esophageal Cancer Protein 1 (1-80 N-Term) is suitable for use in Immunohistochemistry, Immunofluorescence, Immunocytochemistry and ELISA research applications.
Applications	IHC-P, IF, ICC, ELISA
Host/Source	Rabbit
Reactivity	Human, Rat, Mouse

PRODUCT PROPERTIES

Clonality	Polyclonal
Clone ID	
Concentration	1 mg/mL
Conjugation	Unconjugated
Purification	The antibody was affinity-purified from rabbit anti-serum by affinity-chromatography.
Dilution Range	IHC 1:100-1:300 IF 1:200-1:1000 ELISA 1:10000
Formulation	PBS, 50% Glycerol, 0.5% BSA and 0.02% Sodium Azide.
Isotype	IgG
Storage Instruction	Store at -20°C for up to 1 year from the date of receipt, and avoid repeat freeze-thaw cycles.

TARGET INFORMATION

Gene ID	9940
Gene Symbol	DLEC1
Uniprot ID	DLEC1_HUMAN
Immunogen	The antiserum was produced against synthesized peptide derived from human DLEC1 at amino acid range 1-50
Immunogen Region	1-80 N-Term
Specificity	DLEC1 polyclonal antibody (Deleted In Lung And Esophageal Cancer Protein 1) binds to endogenous Deleted In Lung And Esophageal Cancer Protein 1 at the amino acid region 1-80 N-Term.
Immunogen Sequence	



Immunohistochemistry analysis of paraffin-embedded human prostate carcinoma tissue, using DLEC1 Antibody. The picture on the right is blocked with the synthesized peptide.

Immunofluorescence analysis of HeLa cells, using DLEC1 Antibody. The picture on the right is blocked with the synthesized peptide.

This product is suitable for in-vitro studies under the RESEARCH USE ONLY [RUO] licence. This product must not be used as for diagnostic or other medical purposes.
St John's Laboratory Ltd, Knowledge Dock Business Centre, University Way, London, E16 2RD | Tel: 0208 223 3081