

## Anti-DLC1 antibody (30-110 N-Term) (STJ92721)

STJ92721

### GENERAL INFORMATION

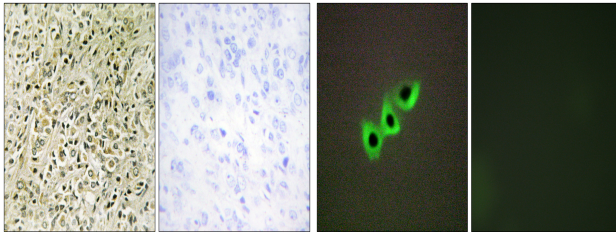
|                          |   |
|--------------------------|---|
| <b>Product Type</b>      | Primary antibodies  |
| <b>Short Description</b> | Rabbit polyclonal antibody anti-Rho Gtpase-Activating Protein 7 (30-110 N-Term) is suitable for use in Immunohistochemistry, Immunofluorescence, Immunocytochemistry and ELISA research applications. |
| <b>Applications</b>      | IHC-P, IF, ICC, ELISA   |
| <b>Host/Source</b>       | Rabbit  |
| <b>Reactivity</b>        | Human, Mouse, Rat   |

### PRODUCT PROPERTIES

|                            |  |
|----------------------------|--|
| <b>Clonality</b>           | Polyclonal   |
| <b>Clone ID</b>            |  |
| <b>Concentration</b>       | 1 mg/mL  |
| <b>Conjugation</b>         | Unconjugated   |
| <b>Purification</b>        | The antibody was affinity-purified from rabbit anti-serum by affinity-chromatography.          |
| <b>Dilution Range</b>      | IHC 1:100-1:300<br>IF 1:200-1:1000<br>ELISA 1:10000  |
| <b>Formulation</b>         | PBS, 50% Glycerol, 0.5% BSA and 0.02% Sodium Azide.  |
| <b>Isotype</b>             | IgG  |
| <b>Storage Instruction</b> | Store at -20°C for up to 1 year from the date of receipt, and avoid repeat freeze-thaw cycles. |

### TARGET INFORMATION

|                           |  |
|---------------------------|--|
| <b>Gene ID</b>            | 10395  |
| <b>Gene Symbol</b>        | DLC1   |
| <b>Uniprot ID</b>         | RHG07_HUMAN  |
| <b>Immunogen</b>          | The antiserum was produced against synthesized peptide derived from human RHG07 at amino acid range 61-110   |
| <b>Immunogen Region</b>   | 30-110 N-Term  |
| <b>Specificity</b>        | DLC1 polyclonal antibody (Rho Gtpase-Activating Protein 7) binds to endogenous Rho Gtpase-Activating Protein 7 at the amino acid region 30-110 N-Term. |
| <b>Immunogen Sequence</b> |  |



Immunohistochemistry analysis of paraffin-embedded human prostate carcinoma tissue, using RHG07 Antibody. The picture on the right is blocked with the synthesized peptide.

Immunofluorescence analysis of A549 cells, using RHG07 Antibody. The picture on the right is blocked with the synthesized peptide.

This product is suitable for in-vitro studies under the RESEARCH USE ONLY [RUO] licence. This product must not be used as for diagnostic or other medical purposes.  
St John's Laboratory Ltd, Knowledge Dock Business Centre, University Way, London, E16 2RD | Tel: 0208 223 3081