

## Anti-DIRAS1 antibody (120-200 C-Term) (STJ92718)

STJ92718

### GENERAL INFORMATION

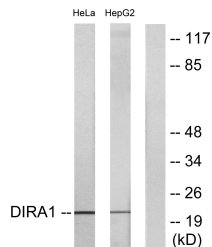
<b>Product Type</b>	Primary antibodies
<b>Short Description</b>	Rabbit polyclonal antibody anti-Gtp-Binding Protein Di-Ras1 (120-200 C-Term) is suitable for use in Western Blot, Immunohistochemistry, Immunofluorescence, Immunocytochemistry and ELISA research applications.
<b>Applications</b>	WB, IHC-P, IF, ICC, ELISA
<b>Host/Source</b>	Rabbit
<b>Reactivity</b>	Human, Rat, Mouse

### PRODUCT PROPERTIES

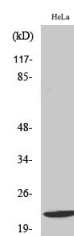
<b>Clonality</b>	Polyclonal
<b>Clone ID</b>	
<b>Concentration</b>	1 mg/mL
<b>Conjugation</b>	Unconjugated
<b>Purification</b>	The antibody was affinity-purified from rabbit anti-serum by affinity-chromatography.
<b>Dilution Range</b>	WB 1:500-1:2000 IHC 1:100-1:300 IF 1:200-1:1000 ELISA 1:20000
<b>Formulation</b>	PBS, 50% Glycerol, 0.5% BSA and 0.02% Sodium Azide.
<b>Isotype</b>	IgG
<b>Storage Instruction</b>	Store at -20°C for up to 1 year from the date of receipt, and avoid repeat freeze-thaw cycles.

### TARGET INFORMATION

<b>Gene ID</b>	148252
<b>Gene Symbol</b>	DIRAS1
<b>Uniprot ID</b>	DIRA1_HUMAN
<b>Immunogen</b>	The antiserum was produced against synthesized peptide derived from human DIRA1 at amino acid range 149-198
<b>Immunogen Region</b>	120-200 C-Term
<b>Specificity</b>	DIRAS1 polyclonal antibody (Gtp-Binding Protein Di-Ras1) binds to endogenous Gtp-Binding Protein Di-Ras1 at the amino acid region 120-200 C-Term.
<b>Immunogen Sequence</b>	



Western blot analysis of lysates from HeLa and HepG2 cells, using DIRA1 Antibody. The lane on the right is blocked with the synthesized peptide.



Western blot analysis of various cells using Di-Ras1 Polyclonal Antibody

This product is suitable for in-vitro studies under the RESEARCH USE ONLY [RUO] licence. This product must not be used as for diagnostic or other medical purposes.  
St John's Laboratory Ltd, Knowledge Dock Business Centre, University Way, London, E16 2RD | Tel: 0208 223 3081