

Anti-ZDHHC9 antibody (310-390 C-Term) (STJ92709)

STJ92709

GENERAL INFORMATION

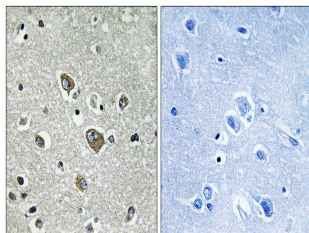
Product Type	Primary antibodies
Short Description	Rabbit polyclonal antibody anti-Palmitoyltransferase Zdhhc9 (310-390 C-Term) is suitable for use in Western Blot, Immunohistochemistry, Immunofluorescence and ELISA research applications.
Applications	WB, IHC-P, IF-P, ELISA
Host/Source	Rabbit
Reactivity	Human, Mouse, Rat

PRODUCT PROPERTIES

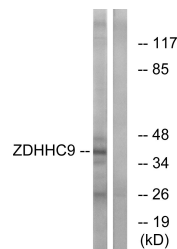
Clonality	Polyclonal
Clone ID	
Concentration	1 mg/mL
Conjugation	Unconjugated
Purification	The antibody was affinity-purified from rabbit anti-serum by affinity-chromatography.
Dilution Range	WB 1:500-1:2000 IHC 1:100-1:300 ELISA 1:40000
Formulation	PBS, 50% Glycerol, 0.5% BSA and 0.02% Sodium Azide.
Isotype	IgG
Storage Instruction	Store at -20°C for up to 1 year from the date of receipt, and avoid repeat freeze-thaw cycles.

TARGET INFORMATION

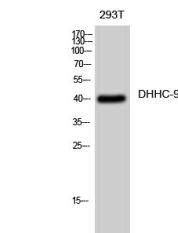
Gene ID	51114
Gene Symbol	ZDHHC9
Uniprot ID	ZDHC9_HUMAN
Immunogen	The antiserum was produced against synthesized peptide derived from human ZDHHC9 at amino acid range 315-364
Immunogen Region	310-390 C-Term
Specificity	ZDHHC9 polyclonal antibody (Palmitoyltransferase Zdhhc9) binds to endogenous Palmitoyltransferase Zdhhc9 at the amino acid region 310-390 C-Term.
Immunogen Sequence	



Immunohistochemistry analysis of paraffin-embedded human brain tissue, using ZDHHC9 Antibody. The picture on the right is blocked with the synthesized peptide.



Western blot analysis of lysates from COLO cells, using ZDHHC9 Antibody. The lane on the right is blocked with the synthesized peptide.



Western blot analysis of 293T cells using DHHC-9 Polyclonal Antibody diluted at 1: 1000

This product is suitable for in-vitro studies under the RESEARCH USE ONLY [RUO] licence. This product must not be used as for diagnostic or other medical purposes.
St John's Laboratory Ltd, Knowledge Dock Business Centre, University Way, London, E16 2RD | Tel: 0208 223 3081