

Anti-ZDHHC7 antibody (250-330 C-Term) (STJ92708)

STJ92708

GENERAL INFORMATION

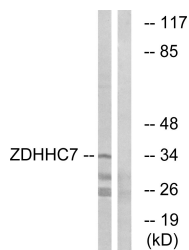
Product Type	Primary antibodies
Short Description	Rabbit polyclonal antibody anti-Palmitoyltransferase Zdhhc7 (250-330 C-Term) is suitable for use in Western Blot and ELISA research applications.
Applications	WB, ELISA
Host/Source	Rabbit
Reactivity	Human, Rat, Mouse

PRODUCT PROPERTIES

Clonality	Polyclonal
Clone ID	
Concentration	1 mg/mL
Conjugation	Unconjugated
Purification	The antibody was affinity-purified from rabbit anti-serum by affinity-chromatography.
Dilution Range	WB 1:500-1:2000 ELISA 1:40000
Formulation	PBS, 50% Glycerol, 0.5% BSA and 0.02% Sodium Azide.
Isotype	IgG
Storage	Store at -20°C for up to 1 year from the date of receipt, and avoid repeat freeze-thaw cycles.
Instruction	

TARGET INFORMATION

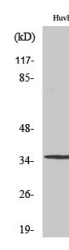
Gene ID	55625
Gene Symbol	ZDHHC7
Uniprot ID	ZDHC7_HUMAN
Immunogen	The antiserum was produced against synthesized peptide derived from human ZDHHC7 at amino acid range 259-308
Immunogen Region	250-330 C-Term
Specificity	ZDHHC7 polyclonal antibody (Palmitoyltransferase Zdhhc7) binds to endogenous Palmitoyltransferase Zdhhc7 at the amino acid region 250-330 C-Term.
Immunogen Sequence	



Western blot analysis of lysates from HUVEC cells, using ZDHHC7 Antibody. The lane on the right is blocked with the synthesized peptide.



Western blot analysis of the lysates from HUVEC cells using ZDHHC7 antibody.



Western blot analysis of various cells using ZDHHC7 Polyclonal Antibody

This product is suitable for in-vitro studies under the RESEARCH USE ONLY [RUO] licence. This product must not be used as for diagnostic or other medical purposes.
St John's Laboratory Ltd, Knowledge Dock Business Centre, University Way, London, E16 2RD | Tel: 0208 223 3081