

Anti-ZDHHC15 antibody (270-350 C-Term) (STJ92707)

STJ92707

GENERAL INFORMATION

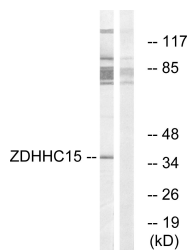
Product Type	Primary antibodies
Short Description	Rabbit polyclonal antibody anti-Palmitoyltransferase Zdhhc15 (270-350 C-Term) is suitable for use in Western Blot and ELISA research applications.
Applications	WB, ELISA
Host/Source	Rabbit
Reactivity	Human, Rat, Mouse

PRODUCT PROPERTIES

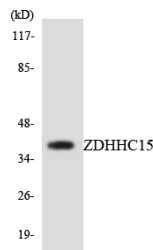
Clonality	Polyclonal
Clone ID	
Concentration	1 mg/mL
Conjugation	Unconjugated
Purification	The antibody was affinity-purified from rabbit anti-serum by affinity-chromatography.
Dilution Range	WB 1:500-1:2000 ELISA 1:10000
Formulation	PBS, 50% Glycerol, 0.5% BSA and 0.02% Sodium Azide.
Isotype	IgG
Storage	Store at -20°C for up to 1 year from the date of receipt, and avoid repeat freeze-thaw cycles.
Instruction	

TARGET INFORMATION

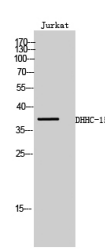
Gene ID	158866
Gene Symbol	ZDHHC15
Uniprot ID	ZDH15_HUMAN
Immunogen	The antiserum was produced against synthesized peptide derived from human ZDHHC15 at amino acid range 288-337
Immunogen Region	270-350 C-Term
Specificity	ZDHHC15 polyclonal antibody (Palmitoyltransferase Zdhhc15) binds to endogenous Palmitoyltransferase Zdhhc15 at the amino acid region 270-350 C-Term.
Immunogen Sequence	



Western blot analysis of lysates from Jurkat cells, using ZDHHC15 Antibody. The lane on the right is blocked with the synthesized peptide.



Western blot analysis of the lysates from 293 cells using ZDHHC15 antibody.



Western blot analysis of Jurkat cells using ZDHHC-15 Polyclonal Antibody