

## Anti-OR51E1 antibody (210-290 C-Term) (STJ92705)

STJ92705

### GENERAL INFORMATION

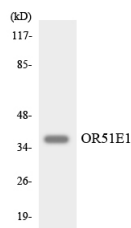
<b>Product Type</b>	Primary antibodies
<b>Short Description</b>	Rabbit polyclonal antibody anti-Olfactory Receptor 51e1 (210-290 C-Term) is suitable for use in Western Blot, Immunofluorescence, Immunocytochemistry and ELISA research applications.
<b>Applications</b>	WB, IF, ICC, ELISA
<b>Host/Source</b>	Rabbit
<b>Reactivity</b>	Human, Rat, Mouse

### PRODUCT PROPERTIES

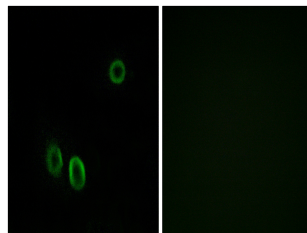
<b>Clonality</b>	Polyclonal
<b>Clone ID</b>	
<b>Concentration</b>	1 mg/mL
<b>Conjugation</b>	Unconjugated
<b>Purification</b>	The antibody was affinity-purified from rabbit anti-serum by affinity-chromatography.
<b>Dilution Range</b>	WB 1:500-1:2000 IF 1:200-1:1000 ELISA 1:20000
<b>Formulation</b>	PBS, 50% Glycerol, 0.5% BSA and 0.02% Sodium Azide.
<b>Isotype</b>	IgG
<b>Storage Instruction</b>	Store at -20°C for up to 1 year from the date of receipt, and avoid repeat freeze-thaw cycles.

### TARGET INFORMATION

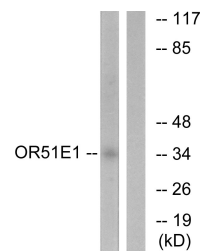
<b>Gene ID</b>	143503
<b>Gene Symbol</b>	OR51E1
<b>Uniprot ID</b>	O51E1_HUMAN
<b>Immunogen</b>	The antiserum was produced against synthesized peptide derived from human OR51E1 at amino acid range 241-290
<b>Immunogen Region</b>	210-290 C-Term
<b>Specificity</b>	OR51E1 polyclonal antibody (Olfactory Receptor 51e1) binds to endogenous Olfactory Receptor 51e1 at the amino acid region 210-290 C-Term.
<b>Immunogen Sequence</b>	



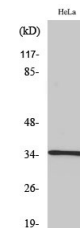
Western blot analysis of the lysates from K562 cells using OR51E1 antibody.



Immunofluorescence analysis of A549 cells, using OR51E1 Antibody. The picture on the right is blocked with the synthesized peptide.



Western blot analysis of lysates from HeLa cells, using OR51E1 Antibody. The lane on the right is blocked with the synthesized peptide.



Western blot analysis of various cells using D-GPCR Polyclonal Antibody

This product is suitable for in-vitro studies under the RESEARCH USE ONLY [RUO] licence. This product must not be used as for diagnostic or other medical purposes.  
 St John's Laboratory Ltd, Knowledge Dock Business Centre, University Way, London, E16 2RD | Tel: 0208 223 3081