

Anti-DGKA antibody (280-360 Internal) (STJ92696)

STJ92696

GENERAL INFORMATION

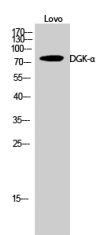
Product Type	Primary antibodies
Short Description	Rabbit polyclonal antibody anti-Diacylglycerol Kinase Alpha (280-360 Internal) is suitable for use in Western Blot, Immunohistochemistry, Immunofluorescence and ELISA research applications.
Applications	WB, IHC-P, IF-P, ELISA
Host/Source	Rabbit
Reactivity	Human, Rat, Mouse

PRODUCT PROPERTIES

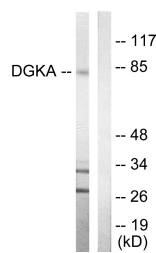
Clonality	Polyclonal
Clone ID	
Concentration	1 mg/mL
Conjugation	Unconjugated
Purification	The antibody was affinity-purified from rabbit anti-serum by affinity-chromatography.
Dilution Range	WB 1:500-1:2000 IHC 1:100-1:300 ELISA 1:20000
Formulation	PBS, 50% Glycerol, 0.5% BSA and 0.02% Sodium Azide.
Isotype	IgG
Storage Instruction	Store at -20°C for up to 1 year from the date of receipt, and avoid repeat freeze-thaw cycles.

TARGET INFORMATION

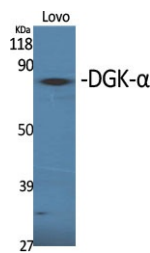
Gene ID	1606
Gene Symbol	DGKA
Uniprot ID	DGKA_HUMAN
Immunogen	The antiserum was produced against synthesized peptide derived from human DGKA at amino acid range 304-353
Immunogen Region	280-360 Internal
Specificity	DGKA polyclonal antibody (Diacylglycerol Kinase Alpha) binds to endogenous Diacylglycerol Kinase Alpha at the amino acid region 280-360 Internal.
Immunogen Sequence	



Western blot analysis of Lovo cells using DGK-Alpha Polyclonal Antibody



Western blot analysis of lysates from Jurkat cells, using DGKA Antibody. The lane on the right is blocked with the synthesized peptide.



Western blot analysis of various cells using DGK-Alpha Polyclonal Antibody

This product is suitable for in-vitro studies under the RESEARCH USE ONLY [RUO] licence. This product must not be used as for diagnostic or other medical purposes.
St John's Laboratory Ltd, Knowledge Dock Business Centre, University Way, London, E16 2RD | Tel: 0208 223 3081