

Anti-DDX52 antibody (530-610 C-Term) (STJ92680)

STJ92680

GENERAL INFORMATION

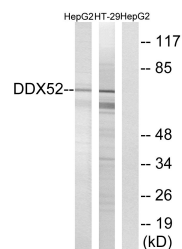
Product Type	Primary antibodies
Short Description	Rabbit polyclonal antibody anti-Probable Atp-Dependent Rna Helicase Ddx52 (530-610 C-Term) is suitable for use in Western Blot, Immunohistochemistry, Immunofluorescence and ELISA research applications.
Applications	WB, IHC-P, IF-P, ELISA
Host/Source	Rabbit
Reactivity	Human, Rat, Mouse

PRODUCT PROPERTIES

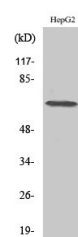
Clonality	Polyclonal
Clone ID	
Concentration	1 mg/mL
Conjugation	Unconjugated
Purification	The antibody was affinity-purified from rabbit anti-serum by affinity-chromatography.
Dilution Range	WB 1:500-1:2000 IHC 1:100-1:300 ELISA 1:40000
Formulation	PBS, 50% Glycerol, 0.5% BSA and 0.02% Sodium Azide.
Isotype	IgG
Storage Instruction	Store at -20°C for up to 1 year from the date of receipt, and avoid repeat freeze-thaw cycles.

TARGET INFORMATION

Gene ID	11056
Gene Symbol	DDX52
Uniprot ID	DDX52_HUMAN
Immunogen	The antiserum was produced against synthesized peptide derived from human DDX52 at amino acid range 550-599
Immunogen Region	530-610 C-Term
Specificity	DDX52 polyclonal antibody (Probable Atp-Dependent Rna Helicase Ddx52) binds to endogenous Probable Atp-Dependent Rna Helicase Ddx52 at the amino acid region 530-610 C-Term.
Immunogen Sequence	



Western blot analysis of lysates from HepG2 and HT-29 cells, using DDX52 Antibody. The lane on the right is blocked with the synthesized peptide.



Western blot analysis of various cells using DDX52 Polyclonal Antibody diluted at 1:500 cells nucleus extracted by Minute TM Cytoplasmic and Nuclear Fractionation kit (SC-003, Inventibiotec, MN, USA).

This product is suitable for in-vitro studies under the RESEARCH USE ONLY [RUO] licence. This product must not be used as for diagnostic or other medical purposes.
St John's Laboratory Ltd, Knowledge Dock Business Centre, University Way, London, E16 2RD | Tel: 0208 223 3081