

Anti-DDX3 antibody (14-63) (STJ92677)

STJ92677

GENERAL INFORMATION

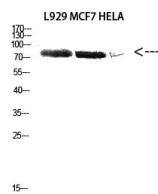
Product Type	Primary antibodies
Short Description	Rabbit polyclonal antibody anti-ATP-dependent RNA helicase DDX3X and ATP-dependent RNA helicase DDX3Y (14-63) is suitable for use in Western Blot and ELISA research applications.
Applications	WB, ELISA
Host/Source	Rabbit
Reactivity	Human, Mouse

PRODUCT PROPERTIES

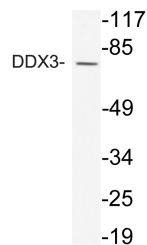
Clonality	Polyclonal
Clone ID	
Concentration	1 mg/mL
Conjugation	Unconjugated
Purification	The antibody was affinity-purified from rabbit anti-serum by affinity-chromatography.
Dilution	WB 1:500-1:2000
Range	ELISA 1:10000
Formulation	PBS, 50% Glycerol, 0.5% BSA and 0.02% Sodium Azide.
Isotype	IgG
Storage	Store at -20°C for up to 1 year from the date of receipt, and avoid repeat freeze-thaw cycles.
Instruction	

TARGET INFORMATION

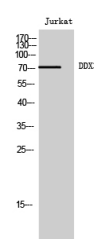
Gene ID	1654 8653
Gene Symbol	DDX3X DDX3Y
Uniprot ID	DDX3X_HUMAN DDX3Y_HUMAN
Immunogen	The antiserum was produced against synthesized peptide derived from human DDX3 at amino acid range 14-63
Immunogen Region	14-63
Specificity	DDX3 polyclonal antibody (ATP-dependent RNA helicase DDX3X and ATP-dependent RNA helicase DDX3Y) binds to endogenous ATP-dependent RNA helicase DDX3X and ATP-dependent RNA helicase DDX3Y at the amino acid region 14-63.
Immunogen Sequence	



Western blot analysis of L929 MCF7 HELA cells using Antibody diluted at 2000. Secondary antibody was diluted at 1:20000



Western blot analysis of lysate from Jurkat cells, using DDX3 antibody.



Western blot analysis of Jurkat cells using DDX3 Polyclonal Antibody diluted at 1: 2000

This product is suitable for in-vitro studies under the RESEARCH USE ONLY [RUO] licence. This product must not be used as for diagnostic or other medical purposes.
St John's Laboratory Ltd, Knowledge Dock Business Centre, University Way, London, E16 2RD | Tel: 0208 223 3081