

Anti-DDX3X antibody (440-520) (STJ92676)

STJ92676

GENERAL INFORMATION

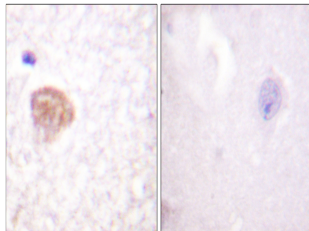
Product Type	Primary antibodies
Short Description	Rabbit polyclonal antibody anti-Atp-Dependent Rna Helicase Ddx3x (440-520) is suitable for use in Western Blot, Immunohistochemistry, Immunofluorescence and ELISA research applications.
Applications	WB, IHC-P, IF-P, ELISA
Host/Source	Rabbit
Reactivity	Human, Mouse, Rat

PRODUCT PROPERTIES

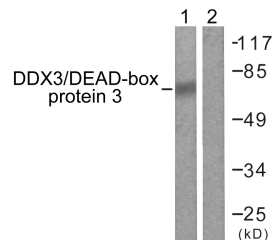
Clonality	Polyclonal
Clone ID	
Concentration	1 mg/mL
Conjugation	Unconjugated
Purification	The antibody was affinity-purified from rabbit anti-serum by affinity-chromatography.
Dilution Range	WB 1:500-1:2000 IHC 1:100-1:300 ELISA 1:10000
Formulation	PBS, 50% Glycerol, 0.5% BSA and 0.02% Sodium Azide.
Isotype	IgG
Storage Instruction	Store at -20°C for up to 1 year from the date of receipt, and avoid repeat freeze-thaw cycles.

TARGET INFORMATION

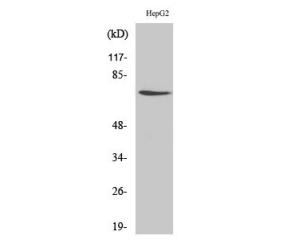
Gene ID	1654
Gene Symbol	DDX3X
Uniprot ID	DDX3X_HUMAN
Immunogen	The antiserum was produced against synthesized peptide derived from human DDX3/DEAD-box Protein 3 at amino acid range 466-515
Immunogen Region	440-520
Specificity	DDX3X polyclonal antibody (Atp-Dependent Rna Helicase Ddx3x) binds to endogenous Atp-Dependent Rna Helicase Ddx3x at the amino acid region 440-520.
Immunogen Sequence	



Immunohistochemistry analysis of paraffin-embedded human brain tissue, using DDX3/DEAD-box Protein 3 Antibody. The picture on the right is blocked with the synthesized peptide.



Western blot analysis of lysates from HepG2 cells, using DDX3/DEAD-box Protein 3 Antibody. The lane on the right is blocked with the synthesized peptide.



Western blot analysis of various cells using DDX3 Polyclonal Antibody

This product is suitable for in-vitro studies under the RESEARCH USE ONLY [RUO] licence. This product must not be used as for diagnostic or other medical purposes.
St John's Laboratory Ltd, Knowledge Dock Business Centre, University Way, London, E16 2RD | Tel: 0208 223 3081