

Anti-DDX24 antibody (10-90 N-Term) (STJ92675)

STJ92675

GENERAL INFORMATION

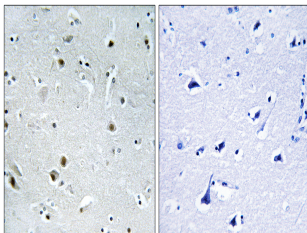
Product Type	Primary antibodies
Short Description	Rabbit polyclonal antibody anti-Atp-Dependent Rna Helicase Ddx24 (10-90 N-Term) is suitable for use in Immunohistochemistry, Immunofluorescence and ELISA research applications.
Applications	IHC-P, IF-P, ELISA
Host/Source	Rabbit
Reactivity	Human, Rat, Mouse

PRODUCT PROPERTIES

Clonality	Polyclonal
Clone ID	
Concentration	1 mg/mL
Conjugation	Unconjugated
Purification	The antibody was affinity-purified from rabbit anti-serum by affinity-chromatography.
Dilution Range	IHC 1:100-1:300 ELISA 1:40000
Formulation	PBS, 50% Glycerol, 0.5% BSA and 0.02% Sodium Azide.
Isotype	IgG
Storage	Store at -20°C for up to 1 year from the date of receipt, and avoid repeat freeze-thaw cycles.
Instruction	

TARGET INFORMATION

Gene ID	57062
Gene Symbol	DDX24
Uniprot ID	DDX24_HUMAN
Immunogen	The antiserum was produced against synthesized peptide derived from human DDX24 at amino acid range 41-90
Immunogen Region	10-90 N-Term
Specificity	DDX24 polyclonal antibody (Atp-Dependent Rna Helicase Ddx24) binds to endogenous Atp-Dependent Rna Helicase Ddx24 at the amino acid region 10-90 N-Term.
Immunogen Sequence	



Immunohistochemistry analysis of paraffin-embedded human brain, using DDX24 Antibody. The picture on the right is blocked with the synthesized peptide.