

Anti-AKR1C3 antibody (160-240 Internal) (STJ92671)

STJ92671

GENERAL INFORMATION

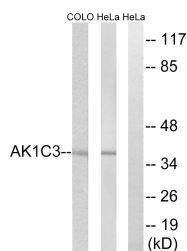
Product Type	Primary antibodies
Short Description	Rabbit polyclonal antibody anti-Aldo-Keto Reductase Family 1 Member C3 (160-240 Internal) is suitable for use in Western Blot and ELISA research applications.
Applications	WB, ELISA
Host/Source	Rabbit
Reactivity	Human, Rat, Mouse

PRODUCT PROPERTIES

Clonality	Polyclonal
Clone ID	
Concentration	1 mg/mL
Conjugation	Unconjugated
Purification	The antibody was affinity-purified from rabbit anti-serum by affinity-chromatography.
Dilution Range	WB 1:500-1:2000 ELISA 1:20000
Formulation	PBS, 50% Glycerol, 0.5% BSA and 0.02% Sodium Azide.
Isotype	IgG
Storage	Store at -20°C for up to 1 year from the date of receipt, and avoid repeat freeze-thaw cycles.
Instruction	

TARGET INFORMATION

Gene ID	8644
Gene Symbol	AKR1C3
Uniprot ID	AK1C3_HUMAN
Immunogen	The antiserum was produced against synthesized peptide derived from human AKR1C3 at amino acid range 191-240
Immunogen Region	160-240 Internal
Specificity	AKR1C3 polyclonal antibody (Aldo-Keto Reductase Family 1 Member C3) binds to endogenous Aldo-Keto Reductase Family 1 Member C3 at the amino acid region 160-240 Internal.
Immunogen Sequence	



Western blot analysis of lysates from HeLa and COLO cells, using AKR1C3 Antibody. The lane on the right is blocked with the synthesized peptide.

This product is suitable for in-vitro studies under the RESEARCH USE ONLY [RUO] licence. This product must not be used as for diagnostic or other medical purposes.
St John's Laboratory Ltd, Knowledge Dock Business Centre, University Way, London, E16 2RD | Tel: 0208 223 3081