

## Anti-AKR1C2 antibody (40-120 Internal) (STJ92670)

STJ92670

### GENERAL INFORMATION

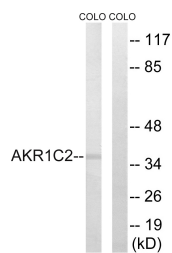
<b>Product Type</b>	Primary antibodies
<b>Short Description</b>	Rabbit polyclonal antibody anti-Aldo-Keto Reductase Family 1 Member C2 (40-120 Internal) is suitable for use in Western Blot, Immunohistochemistry, Immunofluorescence and ELISA research applications.
<b>Applications</b>	WB, IHC-P, IF-P, ELISA
<b>Host/Source</b>	Rabbit
<b>Reactivity</b>	Human, Rat, Mouse

### PRODUCT PROPERTIES

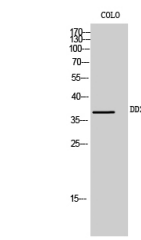
<b>Clonality</b>	Polyclonal
<b>Clone ID</b>	
<b>Concentration</b>	1 mg/mL
<b>Conjugation</b>	Unconjugated
<b>Purification</b>	The antibody was affinity-purified from rabbit anti-serum by affinity-chromatography.
<b>Dilution Range</b>	WB 1:500-1:2000 IHC 1:100-1:300 ELISA 1:20000
<b>Formulation</b>	PBS, 50% Glycerol, 0.5% BSA and 0.02% Sodium Azide.
<b>Isotype</b>	IgG
<b>Storage Instruction</b>	Store at 20°C for up to 1 year from the date of receipt, and avoid repeat freeze-thaw cycles.

### TARGET INFORMATION

<b>Gene ID</b>	1646
<b>Gene Symbol</b>	AKR1C2
<b>Uniprot ID</b>	AK1C2_HUMAN
<b>Immunogen Region</b>	The antiserum was produced against synthesized peptide derived from human AKR1C2 at amino acid range 21-70 40-120 Internal
<b>Specificity</b>	AKR1C2 polyclonal antibody (Aldo-Keto Reductase Family 1 Member C2) binds to endogenous Aldo-Keto Reductase Family 1 Member C2 at the amino acid region 40-120 Internal.
<b>Immunogen Sequence</b>	



Western blot analysis of lysates from COLO cells, using AKR1C2 Antibody. The lane on the right is blocked with the synthesized peptide.



Western blot analysis of COLO cells using DD2 Polyclonal Antibody

This product is suitable for in-vitro studies under the RESEARCH USE ONLY [RUO] licence. This product must not be used as for diagnostic or other medical purposes.  
St John's Laboratory Ltd, Knowledge Dock Business Centre, University Way, London, E16 2RD | Tel: 0208 223 3081