

Anti-DCC antibody (410-490 Internal) (STJ92665)

STJ92665

GENERAL INFORMATION

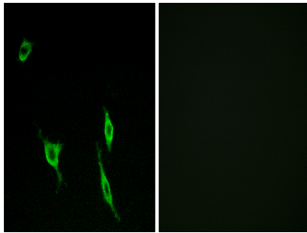
Product Type	Primary antibodies
Short Description	Rabbit polyclonal antibody anti-Netrin Receptor Dcc (410-490 Internal) is suitable for use in Western Blot, Immunofluorescence, Immunocytochemistry and ELISA research applications.
Applications	WB, IF, ICC, ELISA
Host/Source	Rabbit
Reactivity	Human, Mouse, Rat

PRODUCT PROPERTIES

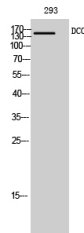
Clonality	Polyclonal
Clone ID	
Concentration	1 mg/mL
Conjugation	Unconjugated
Purification	The antibody was affinity-purified from rabbit anti-serum by affinity-chromatography.
Dilution Range	WB 1:500-1:2000 IF 1:200-1:1000 ELISA 1:20000
Formulation	PBS, 50% Glycerol, 0.5% BSA and 0.02% Sodium Azide.
Isotype	IgG
Storage Instruction	Store at -20°C for up to 1 year from the date of receipt, and avoid repeat freeze-thaw cycles.

TARGET INFORMATION

Gene ID	1630
Gene Symbol	DCC
Uniprot ID	DCC_HUMAN
Immunogen	The antiserum was produced against synthesized peptide derived from human DCC at amino acid range 441-490
Region	410-490 Internal
Specificity	DCC polyclonal antibody (Netrin Receptor Dcc) binds to endogenous Netrin Receptor Dcc at the amino acid region 410-490 Internal.
Immunogen Sequence	



Immunofluorescence analysis of LOVO cells, using DCC Antibody. The picture on the right is blocked with the synthesized peptide.



Western blot analysis of 293 cells using DCC Polyclonal Antibody diluted at 1: 500