

Anti-DCLK3 antibody (260-340 Internal) (STJ92664)

STJ92664

GENERAL INFORMATION

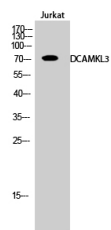
Product Type	Primary antibodies
Short Description	Rabbit polyclonal antibody anti-Serine/Threonine-Protein Kinase Dclk3 (260-340 Internal) is suitable for use in Western Blot, Immunohistochemistry, Immunofluorescence and ELISA research applications.
Applications	WB, IHC-P, IF-P, ELISA
Host/Source	Rabbit
Reactivity	Human, Rat, Mouse

PRODUCT PROPERTIES

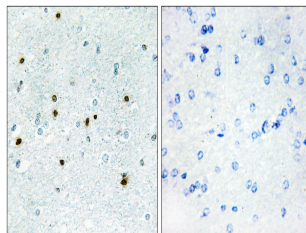
Clonality	Polyclonal
Clone ID	
Concentration	1 mg/mL
Conjugation	Unconjugated
Purification	The antibody was affinity-purified from rabbit anti-serum by affinity-chromatography.
Dilution Range	WB 1:500-1:2000 IHC 1:100-1:300 ELISA 1:5000
Formulation	PBS, 50% Glycerol, 0.5% BSA and 0.02% Sodium Azide.
Isotype	IgG
Storage Instruction	Store at -20°C for up to 1 year from the date of receipt, and avoid repeat freeze-thaw cycles.

TARGET INFORMATION

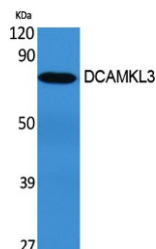
Gene ID	85443
Gene Symbol	DCLK3
Uniprot ID	DCLK3_HUMAN
Immunogen Region	The antiserum was produced against synthesized peptide derived from human DCLK3 at amino acid range 291-340
Specificity	260-340 Internal
Immunogen Sequence	DCLK3 polyclonal antibody (Serine/Threonine-Protein Kinase Dclk3) binds to endogenous Serine/Threonine-Protein Kinase Dclk3 at the amino acid region 260-340 Internal.



Western blot analysis of Jurkat cells using DCAMKL3 Polyclonal Antibody



Immunohistochemistry analysis of paraffin-embedded human brain, using DCLK3 Antibody. The picture on the right is blocked with the synthesized peptide.



Western blot analysis of various cells using DCAMKL3 Polyclonal Antibody

This product is suitable for in-vitro studies under the RESEARCH USE ONLY [RUO] licence. This product must not be used as for diagnostic or other medical purposes.
St John's Laboratory Ltd, Knowledge Dock Business Centre, University Way, London, E16 2RD | Tel: 0208 223 3081