

Anti-DBF4 antibody (10-90 N-Term) (STJ92660)

STJ92660

GENERAL INFORMATION

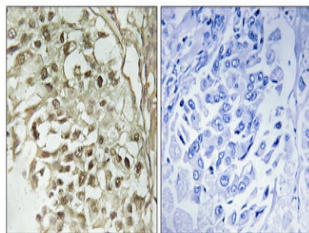
Product Type	Primary antibodies
Short Description	Rabbit polyclonal antibody anti-Protein Dbf4 Homolog A (10-90 N-Term) is suitable for use in Western Blot, Immunohistochemistry, Immunofluorescence and ELISA research applications.
Applications	WB, IHC-P, IF-P, ELISA
Host/Source	Rabbit
Reactivity	Human, Mouse, Monkey

PRODUCT PROPERTIES

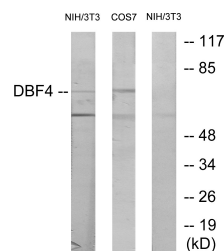
Clonality	Polyclonal
Clone ID	
Concentration	1 mg/mL
Conjugation	Unconjugated
Purification	The antibody was affinity-purified from rabbit anti-serum by affinity-chromatography.
Dilution Range	WB 1:500-1:2000 IHC 1:100-1:300 ELISA 1:10000
Formulation	PBS, 50% Glycerol, 0.5% BSA and 0.02% Sodium Azide.
Isotype	IgG
Storage Instruction	Store at -20°C for up to 1 year from the date of receipt, and avoid repeat freeze-thaw cycles.

TARGET INFORMATION

Gene ID	10926
Gene Symbol	DBF4
Uniprot ID	DBF4A_HUMAN
Immunogen	The antiserum was produced against synthesized peptide derived from human DBF4 at amino acid range 10-59
Immunogen Region	10-90 N-Term
Specificity	DBF4 polyclonal antibody (Protein Dbf4 Homolog A) binds to endogenous Protein Dbf4 Homolog A at the amino acid region 10-90 N-Term.
Immunogen Sequence	



Immunohistochemical analysis of paraffin-embedded human breast cancer. Antibody was diluted at 1:100 (4°C overnight). High-pressure and temperature Tris-EDTA, pH 8.0 was used for antigen retrieval. Negative control (right) obtained from antibody was pre-absorbed by immunogen peptide.



Western blot analysis of lysates from NIH/3T3 cells, treated with H₂O₂ 100μM 30'. COS7 treated with PMA 125ng/ml 30'. using DBF4 Antibody. The lane on the right is blocked with the synthesized peptide.



Western blot analysis of various cells using Dbf4 Polyclonal Antibody cells nucleus extracted by Minute TM Cytoplasmic and Nuclear Fractionation kit (SC-003, Inventibiotec, MN, USA).

This product is suitable for in-vitro studies under the RESEARCH USE ONLY [RUO] licence. This product must not be used as for diagnostic or other medical purposes.
St John's Laboratory Ltd, Knowledge Dock Business Centre, University Way, London, E16 2RD | Tel: 0208 223 3081