

## Anti-CCAR2 antibody (400-480 Internal) (STJ92659)

STJ92659

### GENERAL INFORMATION

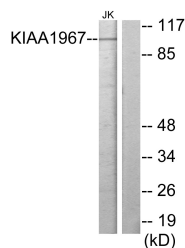
<b>Product Type</b>	Primary antibodies
<b>Short Description</b>	Rabbit polyclonal antibody anti-Cell Cycle And Apoptosis Regulator Protein 2 (400-480 Internal) is suitable for use in Western Blot, Immunohistochemistry, Immunofluorescence and ELISA research applications.
<b>Applications</b>	WB, IHC-P, IF-P, ELISA
<b>Host/Source</b>	Rabbit
<b>Reactivity</b>	Human, Rat, Mouse

### PRODUCT PROPERTIES

<b>Clonality</b>	Polyclonal
<b>Clone ID</b>	
<b>Concentration</b>	1 mg/mL
<b>Conjugation</b>	Unconjugated
<b>Purification</b>	The antibody was affinity-purified from rabbit anti-serum by affinity-chromatography.
<b>Dilution</b>	WB 1:500-1:2000
<b>Range</b>	ELISA 1:20000
<b>Formulation</b>	PBS, 50% Glycerol, 0.5% BSA and 0.02% Sodium Azide.
<b>Isotype</b>	IgG
<b>Storage</b>	Store at -20°C for up to 1 year from the date of receipt, and avoid repeat freeze-thaw cycles.
<b>Instruction</b>	

### TARGET INFORMATION

<b>Gene ID</b>	57805
<b>Gene Symbol</b>	CCAR2
<b>Uniprot ID</b>	CCAR2_HUMAN
<b>Immunogen</b>	The antiserum was produced against synthesized peptide derived from human KIAA1967 at amino acid range 431-480
<b>Immunogen Region</b>	400-480 Internal
<b>Specificity</b>	CCAR2 polyclonal antibody (Cell Cycle And Apoptosis Regulator Protein 2) binds to endogenous Cell Cycle And Apoptosis Regulator Protein 2 at the amino acid region 400-480 Internal.
<b>Immunogen Sequence</b>	



Western blot analysis of lysates from Jurkat cells, using KIAA1967 Antibody. The lane on the right is blocked with the synthesized peptide.