

Anti-DAB1 antibody (170-250) (STJ92647)

STJ92647

GENERAL INFORMATION

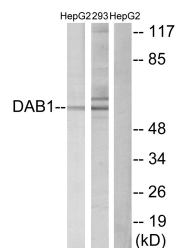
Product Type	Primary antibodies
Short Description	Rabbit polyclonal antibody anti-Disabled Homolog 1 (170-250) is suitable for use in Western Blot, Immunofluorescence, Immunocytochemistry and ELISA research applications.
Applications	WB, IF, ICC, ELISA
Host/Source	Rabbit
Reactivity	Human, Mouse, Rat

PRODUCT PROPERTIES

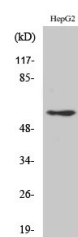
Clonality	Polyclonal
Clone ID	
Concentration	1 mg/mL
Conjugation	Unconjugated
Purification	The antibody was affinity-purified from rabbit anti-serum by affinity-chromatography.
Dilution Range	WB 1:500-1:2000 IF 1:200-1:1000 ELISA 1:20000
Formulation	PBS, 50% Glycerol, 0.5% BSA and 0.02% Sodium Azide.
Isotype	IgG
Storage Instruction	Store at -20°C for up to 1 year from the date of receipt, and avoid repeat freeze-thaw cycles.

TARGET INFORMATION

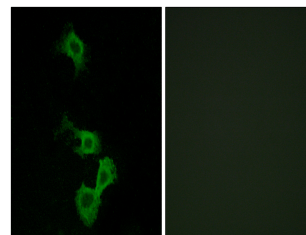
Gene ID	1600
Gene Symbol	DAB1
Uniprot ID	DAB1_HUMAN
Immunogen	The antiserum was produced against synthesized peptide derived from human Dab1 at amino acid range 199-248
Immunogen Region	170-250
Specificity	DAB1 polyclonal antibody (Disabled Homolog 1) binds to endogenous Disabled Homolog 1 at the amino acid region 170-250.
Immunogen Sequence	



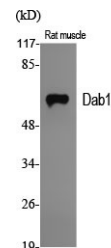
Western blot analysis of lysates from HepG2 and 293 cells, using Dab1 Antibody. The lane on the right is blocked with the synthesized peptide.



Western blot analysis of 293 cells using Dab1 Polyclonal Antibody



Immunofluorescence analysis of MCF7 cells, using Dab1 Antibody. The picture on the right is blocked with the synthesized peptide.



Western blot analysis of various cells using Dab1 Polyclonal Antibody

This product is suitable for in-vitro studies under the RESEARCH USE ONLY [RUO] licence. This product must not be used as for diagnostic or other medical purposes.
St John's Laboratory Ltd, Knowledge Dock Business Centre, University Way, London, E16 2RD | Tel: 0208 223 3081