

Anti-TPD52L3 antibody (10-90 Internal) (STJ92645)

STJ92645

GENERAL INFORMATION

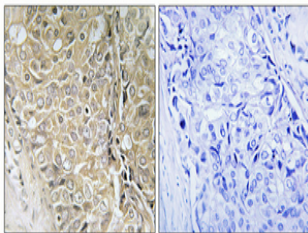
Product Type	Primary antibodies
Short Description	Rabbit polyclonal antibody anti-Tumor Protein D55 (10-90 Internal) is suitable for use in Immunohistochemistry, Immunofluorescence and ELISA research applications.
Applications	IHC-P, IF-P, ELISA
Host/Source	Rabbit
Reactivity	Human, Rat, Mouse

PRODUCT PROPERTIES

Clonality	Polyclonal
Clone ID	
Concentration	1 mg/mL
Conjugation	Unconjugated
Purification	The antibody was affinity-purified from rabbit anti-serum by affinity-chromatography.
Dilution Range	IHC 1:100-1:300 ELISA 1:20000
Formulation	PBS, 50% Glycerol, 0.5% BSA and 0.02% Sodium Azide.
Isotype	IgG
Storage Instruction	Store at -20°C for up to 1 year from the date of receipt, and avoid repeat freeze-thaw cycles.

TARGET INFORMATION

Gene ID	89882
Gene Symbol	TPD52L3
Uniprot ID	TPD55_HUMAN
Immunogen	The antiserum was produced against synthesized peptide derived from human TPD52L3 at amino acid range 10-59
Immunogen Region	10-90 Internal
Specificity	TPD52L3 polyclonal antibody (Tumor Protein D55) binds to endogenous Tumor Protein D55 at the amino acid region 10-90 Internal.
Immunogen Sequence	



Immunohistochemical analysis of paraffin-embedded Human prostate cancer. Antibody was diluted at 1:100 (4°C overnight). High-pressure and temperature Tris-EDTA, pH8.0 was used for antigen retrieval. Negative control (right) obtained from antibody was pre-absorbed by immunogen peptide.