

## Anti-KRT18 antibody (350-430 C-Term) (STJ92633)

STJ92633

### GENERAL INFORMATION

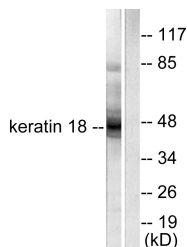
<b>Product Type</b>	Primary antibodies
<b>Short Description</b>	Rabbit polyclonal antibody anti-Keratin-Type I Cytoskeletal 18 (350-430 C-Term) is suitable for use in Western Blot, Immunohistochemistry, Immunofluorescence, Immunocytochemistry and ELISA research applications.
<b>Applications</b>	WB, IHC-P, IF, ICC, ELISA
<b>Host/Source</b>	Rabbit
<b>Reactivity</b>	Human, Mouse, Rat

### PRODUCT PROPERTIES

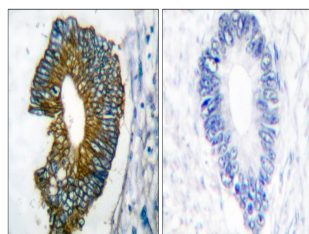
<b>Clonality</b>	Polyclonal
<b>Clone ID</b>	
<b>Concentration</b>	1 mg/mL
<b>Conjugation</b>	Unconjugated
<b>Purification</b>	The antibody was affinity-purified from rabbit anti-serum by affinity-chromatography.
<b>Dilution</b>	WB 1:500-1:2000
<b>Range</b>	IHC 1:100-1:300 IF 1:200-1:1000 ELISA 1:10000
<b>Formulation</b>	PBS, 50% Glycerol, 0.5% BSA and 0.02% Sodium Azide.
<b>Isotype</b>	IgG
<b>Storage Instruction</b>	Store at -20°C for up to 1 year from the date of receipt, and avoid repeat freeze-thaw cycles.

### TARGET INFORMATION

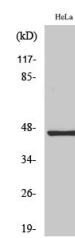
<b>Gene ID</b>	3875
<b>Gene Symbol</b>	KRT18
<b>Uniprot ID</b>	K1C18_HUMAN
<b>Immunogen</b>	The antiserum was produced against synthesized peptide derived from human Keratin 18 at amino acid range 381-430
<b>Immunogen Region</b>	350-430 C-Term
<b>Specificity</b>	KRT18 polyclonal antibody (Keratin-Type I Cytoskeletal 18) binds to endogenous Keratin-Type I Cytoskeletal 18 at the amino acid region 350-430 C-Term.
<b>Immunogen Sequence</b>	



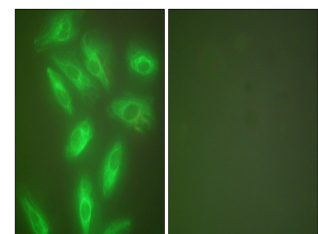
Western blot analysis of lysates from HeLa cells, using Keratin 18 Antibody. The lane on the right is blocked with the synthesized peptide.



Immunohistochemistry analysis of paraffin-embedded human lung carcinoma tissue, using Keratin 18 Antibody. The picture on the right is blocked with the synthesized peptide.



Western blot analysis of HeLa cells using Cytokeratin 18 Polyclonal Antibody diluted at 1: 2000



Immunofluorescence analysis of HeLa cells, using Keratin 18 Antibody. The picture on the right is blocked with the synthesized peptide.

This product is suitable for in-vitro studies under the RESEARCH USE ONLY [RUO] licence. This product must not be used as for diagnostic or other medical purposes.  
St John's Laboratory Ltd, Knowledge Dock Business Centre, University Way, London, E16 2RD | Tel: 0208 223 3081