

Anti-KRT18 antibody (40-120) (STJ92632)

STJ92632

GENERAL INFORMATION

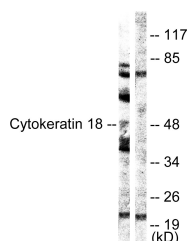
Product Type	Primary antibodies
Short Description	Rabbit polyclonal antibody anti-Keratin-Type I Cytoskeletal 18 (40-120) is suitable for use in Western Blot, Immunohistochemistry, Immunofluorescence, Immunocytochemistry and ELISA research applications.
Applications	WB, IHC-P, IF, ICC, ELISA
Host/Source	Rabbit
Reactivity	Human, Rat, Mouse

PRODUCT PROPERTIES

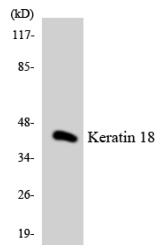
Clonality	Polyclonal
Clone ID	
Concentration	1 mg/mL
Conjugation	Unconjugated
Purification	The antibody was affinity-purified from rabbit anti-serum by affinity-chromatography.
Dilution Range	WB 1:500-1:2000 IHC 1:100-1:300 IF 1:200-1:1000 ELISA 1:20000
Formulation	PBS, 50% Glycerol, 0.5% BSA and 0.02% Sodium Azide.
Isotype	IgG
Storage Instruction	Store at -20°C for up to 1 year from the date of receipt, and avoid repeat freeze-thaw cycles.

TARGET INFORMATION

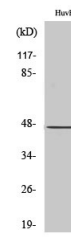
Gene ID	3875
Gene Symbol	KRT18
Uniprot ID	K1C18_HUMAN
Immunogen	The antiserum was produced against synthesized peptide derived from human Keratin 18 at amino acid range 21-70
Immunogen Region	40-120
Specificity	KRT18 polyclonal antibody (Keratin-Type I Cytoskeletal 18) binds to endogenous Keratin-Type I Cytoskeletal 18 at the amino acid region 40-120.
Immunogen Sequence	



Western blot analysis of lysates from HUVEC cells, using Keratin 18 Antibody. The lane on the right is blocked with the synthesized peptide.



Western blot analysis of the lysates from COLO205 cells using Keratin 18 antibody.



Western blot analysis of various cells using Cytokeratin 18 Polyclonal Antibody

This product is suitable for in-vitro studies under the RESEARCH USE ONLY [RUO] licence. This product must not be used as for diagnostic or other medical purposes.
St John's Laboratory Ltd, Knowledge Dock Business Centre, University Way, London, E16 2RD | Tel: 0208 223 3081