

Anti-KRT15 antibody (1-80 N-Term) (STJ92628)

STJ92628

GENERAL INFORMATION

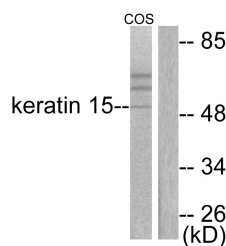
Product Type	Primary antibodies
Short Description	Rabbit polyclonal antibody anti-Keratin-Type I Cytoskeletal 15 (1-80 N-Term) is suitable for use in Western Blot, Immunohistochemistry, Immunofluorescence and ELISA research applications.
Applications	WB, IHC-P, IF-P, ELISA
Host/Source	Rabbit
Reactivity	Human, Mouse, Rat, Monkey

PRODUCT PROPERTIES

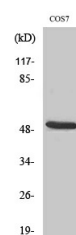
Clonality	Polyclonal
Clone ID	
Concentration	1 mg/mL
Conjugation	Unconjugated
Purification	The antibody was affinity-purified from rabbit anti-serum by affinity-chromatography.
Dilution Range	WB 1:500-1:2000 IHC 1:100-1:300 ELISA 1:20000
Formulation	PBS, 50% Glycerol, 0.5% BSA and 0.02% Sodium Azide.
Isotype	IgG
Storage Instruction	Store at -20°C for up to 1 year from the date of receipt, and avoid repeat freeze-thaw cycles.

TARGET INFORMATION

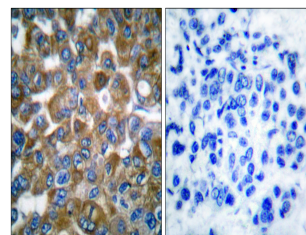
Gene ID	3866
Gene Symbol	KRT15
Uniprot ID	K1C15_HUMAN
Immunogen	The antiserum was produced against synthesized peptide derived from human Keratin 15 at amino acid range 1-50
Immunogen Region	1-80 N-Term
Specificity	KRT15 polyclonal antibody (Keratin-Type I Cytoskeletal 15) binds to endogenous Keratin-Type I Cytoskeletal 15 at the amino acid region 1-80 N-Term.
Immunogen Sequence	



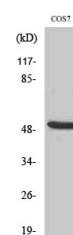
Western blot analysis of lysates from COS7 cells, using Keratin 15 Antibody. The lane on the right is blocked with the synthesized peptide.



Western blot analysis of COS7 cells using Cytokeratin 15 Polyclonal Antibody



Immunohistochemistry analysis of paraffin-embedded human breast carcinoma tissue, using Keratin 15 Antibody. The picture on the right is blocked with the synthesized peptide.



Western blot analysis of various cells using Cytokeratin 15 Polyclonal Antibody