

Anti-CSTL1 antibody (30-110 Internal) (STJ92618)

STJ92618

GENERAL INFORMATION

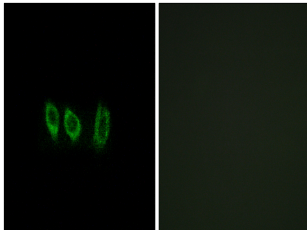
Product Type	Primary antibodies
Short Description	Rabbit polyclonal antibody anti-Cystatin-Like 1 (30-110 Internal) is suitable for use in Immunofluorescence, Immunocytochemistry and ELISA research applications.
Applications	IF, ICC, ELISA
Host/Source	Rabbit
Reactivity	Human, Rat, Mouse

PRODUCT PROPERTIES

Clonality	Polyclonal
Clone ID	
Concentration	1 mg/mL
Conjugation	Unconjugated
Purification	The antibody was affinity-purified from rabbit anti-serum by affinity-chromatography.
Dilution Range	IF 1:200-1:1000 ELISA 1:40000
Formulation	PBS, 50% Glycerol, 0.5% BSA and 0.02% Sodium Azide.
Isotype	IgG
Storage	Store at -20°C for up to 1 year from the date of receipt, and avoid repeat freeze-thaw cycles.
Instruction	

TARGET INFORMATION

Gene ID	128817
Gene Symbol	CSTL1
Uniprot ID	CSTL1_HUMAN
Immunogen	The antiserum was produced against synthesized peptide derived from human CSTL1 at amino acid range 61-110
Immunogen Region	30-110 Internal
Specificity	CSTL1 polyclonal antibody (Cystatin-Like 1) binds to endogenous Cystatin-Like 1 at the amino acid region 30-110 Internal.
Immunogen Sequence	



Immunofluorescence analysis of A549 cells, using CSTL1 Antibody. The picture on the right is blocked with the synthesized peptide.