

Anti-CYSLTR2 antibody (260-340 C-Term) (STJ92610)

STJ92610

GENERAL INFORMATION

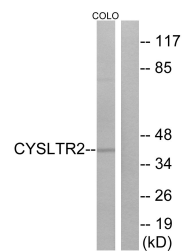
Product Type	Primary antibodies
Short Description	Rabbit polyclonal antibody anti-Cysteiny Leukotriene Receptor 2 (260-340 C-Term) is suitable for use in Western Blot, Immunofluorescence, Immunocytochemistry and ELISA research applications.
Applications	WB, IF, ICC, ELISA
Host/Source	Rabbit
Reactivity	Human, Rat, Mouse

PRODUCT PROPERTIES

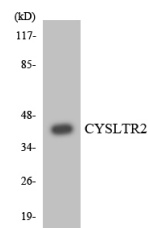
Clonality	Polyclonal
Clone ID	
Concentration	1 mg/mL
Conjugation	Unconjugated
Purification	The antibody was affinity-purified from rabbit anti-serum by affinity-chromatography.
Dilution Range	WB 1:500-1:2000 IF 1:200-1:1000 ELISA 1:20000
Formulation	PBS, 50% Glycerol, 0.5% BSA and 0.02% Sodium Azide.
Isotype	IgG
Storage Instruction	Store at -20°C for up to 1 year from the date of receipt, and avoid repeat freeze-thaw cycles.

TARGET INFORMATION

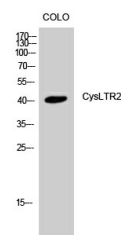
Gene ID	57105
Gene Symbol	CYSLTR2
Uniprot ID	CLTR2_HUMAN
Immunogen	The antiserum was produced against synthesized peptide derived from human CYSLTR2 at amino acid range 281-330
Immunogen Region	260-340 C-Term
Specificity	CYSLTR2 polyclonal antibody (Cysteiny Leukotriene Receptor 2) binds to endogenous Cysteiny Leukotriene Receptor 2 at the amino acid region 260-340 C-Term.
Immunogen Sequence	



Western blot analysis of lysates from COLO cells, using CYSLTR2 Antibody. The lane on the right is blocked with the synthesized peptide.



Western blot analysis of the lysates from HT-29 cells using CYSLTR2 antibody.



Western blot analysis of COLO cells using CYSLTR2 Polyclonal Antibody

This product is suitable for in-vitro studies under the RESEARCH USE ONLY [RUO] licence. This product must not be used as for diagnostic or other medical purposes.
St John's Laboratory Ltd, Knowledge Dock Business Centre, University Way, London, E16 2RD | Tel: 0208 223 3081