

Anti-CYSLTR1 antibody (100-180 Internal) (STJ92609)

STJ92609

GENERAL INFORMATION

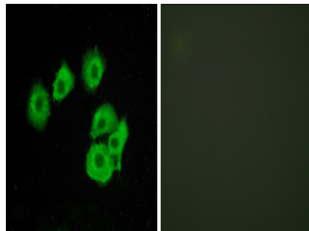
Product Type	Primary antibodies
Short Description	Rabbit polyclonal antibody anti-Cysteinyl Leukotriene Receptor 1 (100-180 Internal) is suitable for use in Western Blot, Immunohistochemistry, Immunofluorescence, Immunocytochemistry and ELISA research applications.
Applications	WB, IHC-P, IF, ICC, ELISA
Host/Source	Rabbit
Reactivity	Human, Monkey

PRODUCT PROPERTIES

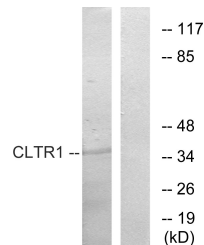
Clonality	Polyclonal
Clone ID	
Concentration	1 mg/mL
Conjugation	Unconjugated
Purification	The antibody was affinity-purified from rabbit anti-serum by affinity-chromatography.
Dilution Range	WB 1:500-1:2000 IHC 1:100-1:300 IF 1:200-1:1000 ELISA 1:10000
Formulation	PBS, 50% Glycerol, 0.5% BSA and 0.02% Sodium Azide.
Isotype	IgG
Storage Instruction	Store at -20°C for up to 1 year from the date of receipt, and avoid repeat freeze-thaw cycles.

TARGET INFORMATION

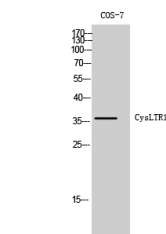
Gene ID	10800
Gene Symbol	CYSLTR1
Uniprot ID	CLTR1_HUMAN
Immunogen	The antiserum was produced against synthesized peptide derived from human CLTR1 at amino acid range 131-180
Immunogen Region	100-180 Internal
Specificity	CYSLTR1 polyclonal antibody (Cysteinyl Leukotriene Receptor 1) binds to endogenous Cysteinyl Leukotriene Receptor 1 at the amino acid region 100-180 Internal.
Immunogen Sequence	



Immunofluorescence analysis of HUVEC cells, using CLTR1 Antibody. The picture on the right is blocked with the synthesized peptide.



Western blot analysis of lysates from COS7 cells, using CLTR1 Antibody. The lane on the right is blocked with the synthesized peptide.



Western blot analysis of COS-7 cells using CysLTR1 Polyclonal Antibody

This product is suitable for in-vitro studies under the RESEARCH USE ONLY [RUO] licence. This product must not be used as for diagnostic or other medical purposes.
St John's Laboratory Ltd, Knowledge Dock Business Centre, University Way, London, E16 2RD | Tel: 0208 223 3081