

## Anti-CYP8B1 antibody (340-420 Internal) (STJ92607)

STJ92607

### GENERAL INFORMATION

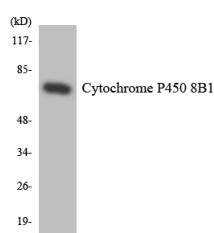
<b>Product Type</b>	Primary antibodies
<b>Short Description</b>	Rabbit polyclonal antibody anti-7-Alpha-Hydroxycholest-4-En-3-One 12-Alpha-Hydroxylase (340-420 Internal) is suitable for use in Western Blot, Immunohistochemistry, Immunofluorescence and ELISA research applications.
<b>Applications</b>	WB, IHC-P, IF-P, ELISA
<b>Host/Source</b>	Rabbit
<b>Reactivity</b>	Human, Mouse

### PRODUCT PROPERTIES

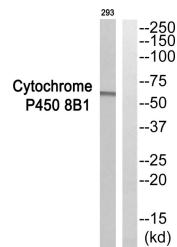
<b>Clonality</b>	Polyclonal
<b>Clone ID</b>	
<b>Concentration</b>	1 mg/mL
<b>Conjugation</b>	Unconjugated
<b>Purification</b>	The antibody was affinity-purified from rabbit anti-serum by affinity-chromatography.
<b>Dilution Range</b>	WB 1:500-1:2000 IHC 1:100-1:300 ELISA 1:40000
<b>Formulation</b>	PBS, 50% Glycerol, 0.5% BSA and 0.02% Sodium Azide.
<b>Isotype</b>	IgG
<b>Storage Instruction</b>	Store at -20°C for up to 1 year from the date of receipt, and avoid repeat freeze-thaw cycles.

### TARGET INFORMATION

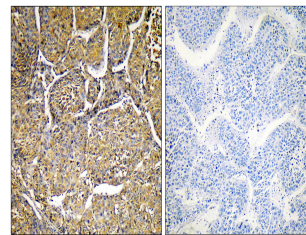
<b>Gene ID</b>	1582
<b>Gene Symbol</b>	CYP8B1
<b>Uniprot ID</b>	CP8B1_HUMAN
<b>Immunogen</b>	The antiserum was produced against synthesized peptide derived from human Cytochrome P450 8B1 at amino acid range 371-420
<b>Immunogen Region</b>	340-420 Internal
<b>Specificity</b>	CYP8B1 polyclonal antibody (7-Alpha-Hydroxycholest-4-En-3-One 12-Alpha-Hydroxylase) binds to endogenous 7-Alpha-Hydroxycholest-4-En-3-One 12-Alpha-Hydroxylase at the amino acid region 340-420 Internal.
<b>Immunogen Sequence</b>	



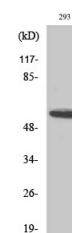
Western blot analysis of the lysates from HT-29 cells using Cytochrome P450 8B1 antibody.



Western blot analysis of Cytochrome P450 8B1 Antibody. The lane on the right is blocked with the Cytochrome P450 8B1 peptide.



Immunohistochemistry analysis of paraffin-embedded human liver, using Cytochrome P450 8B1 Antibody. The lane on the right is blocked with the Cytochrome P450 8B1 peptide.



Western blot analysis of various cells using CYP8B1 Polyclonal Antibody

This product is suitable for in-vitro studies under the RESEARCH USE ONLY [RUO] licence. This product must not be used as for diagnostic or other medical purposes.  
St John's Laboratory Ltd, Knowledge Dock Business Centre, University Way, London, E16 2RD | Tel: 0208 223 3081